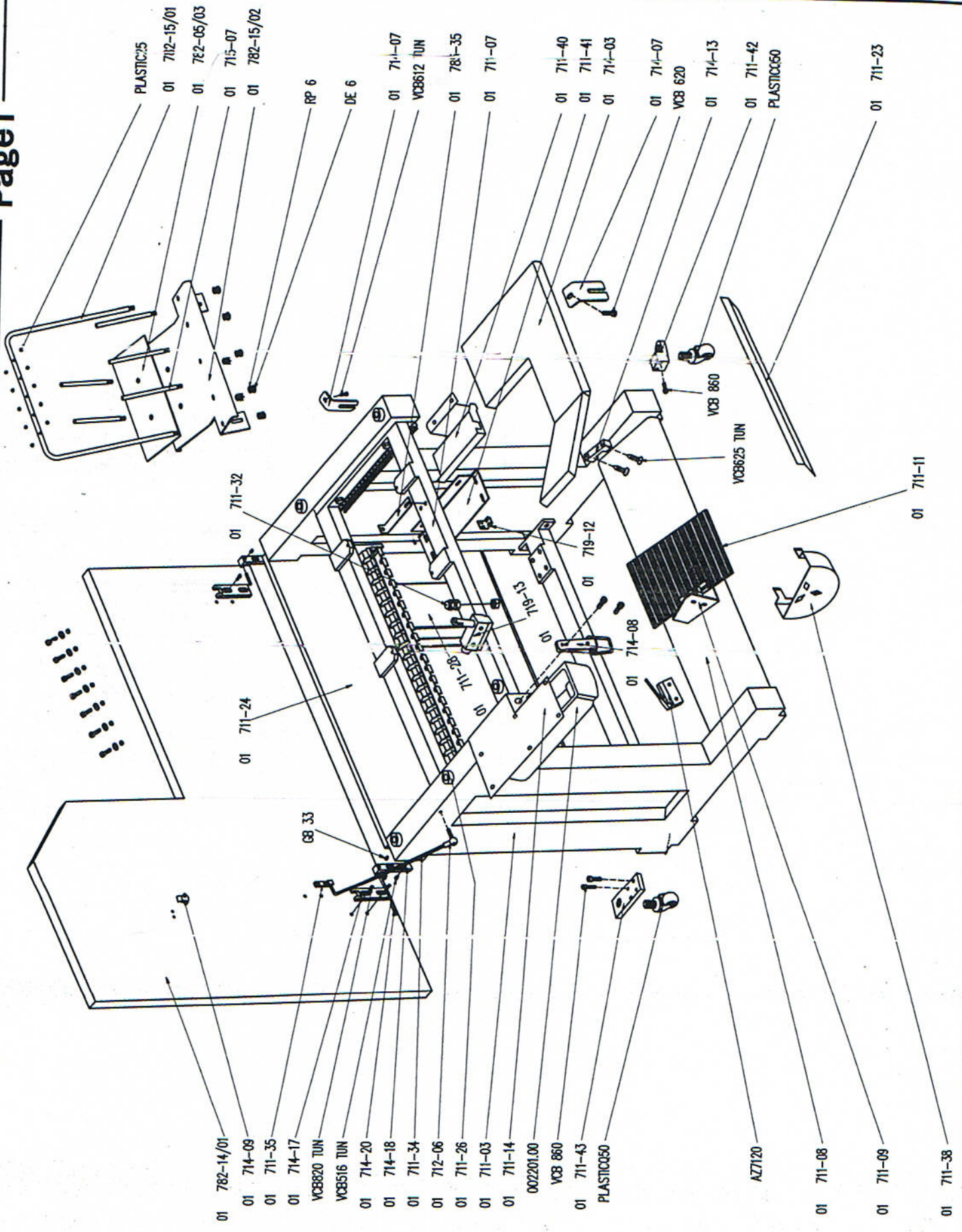


# 目录 (Table Of Contents)

机架组件 (Mobile Module)	1
马达组件 (motor Sub-Assembly)	2
传动组件 (Transmission Module)	3
送料机构 (Feed Mechanism)	4
正反针距组件 (The Por And Con Needle Is Aprat From The Module)	5
步进马达、送料组件 (Unit Motor Feeding Module)	6
组装载组件 (The Assembly Cuts The Module)	7
张力组件 (Tensity Module)	8
踏脚组件 (Treads The Foot Module)	9
机头组件 (Nose Module)	10
针棒/压脚组件 (The Needle Stick/Presses The Foot Module)	11
松线器组件 (Loose line Module)	12
线夹组件 (Insulating Clamp Module)	13
上弯线和剪刀组件 (On Curved line And Scissors Module)	14
定位器、针板和压脚 (locator、The Needle Board And Presses The Foot)	15
电路图和气路图 (Circuit Diagram Frriendly Road Map)	16

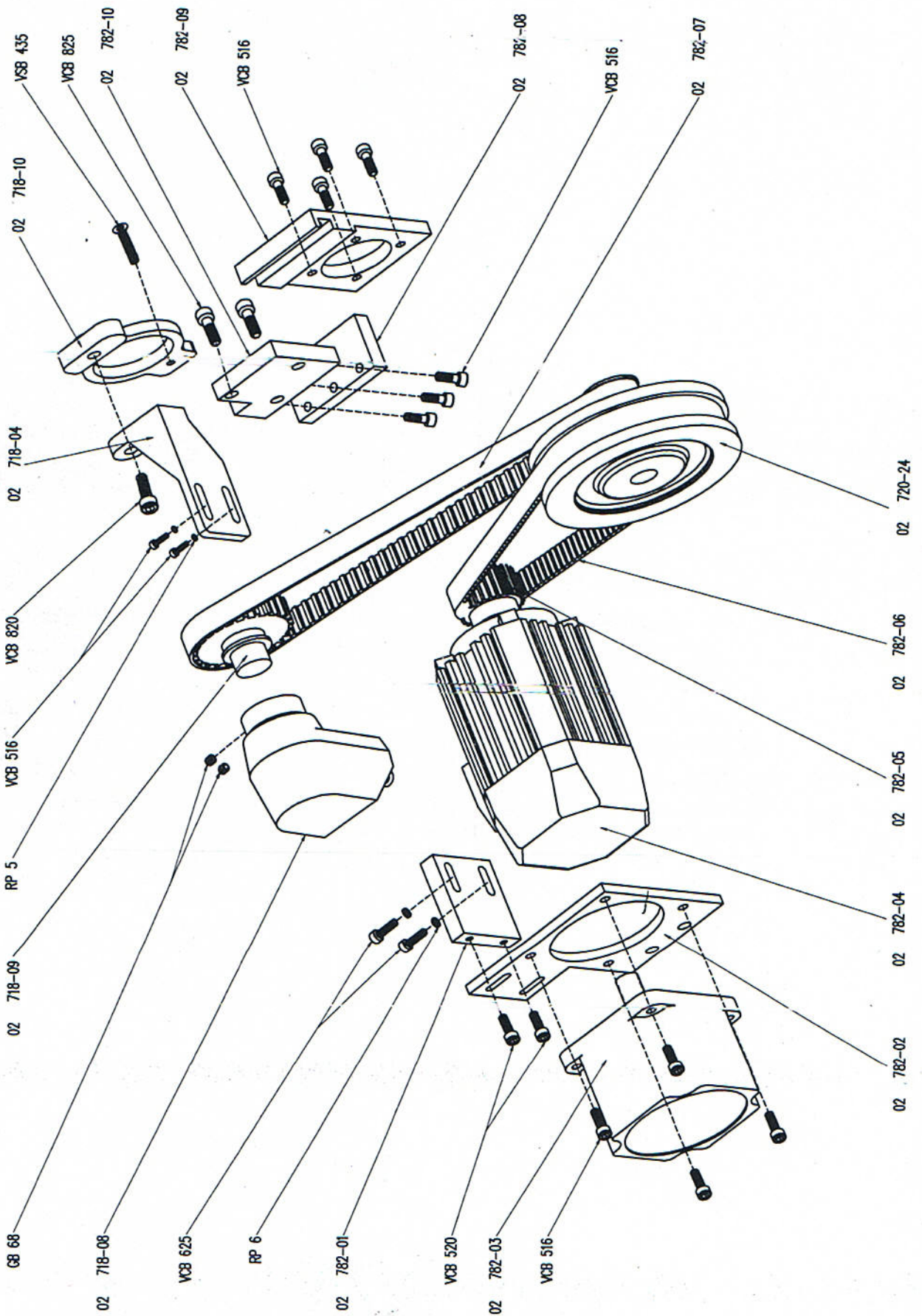
# Page 1 机架组件 (Mobile Module)

Number	Quantity	名称	Name
01 711-03	1	左机架	Left Hand Leg Assy
01 711-07	1	机架支撑框架	Machine Support Frame
01 711-08	1	左边固定脚踏板	Treadle Rubber Pad
01 711-09	1	开关托架	Foot Treadle
01 711-11	1	脚踏板皮垫	Right Hand Rubber Pad
01 711-14	1	抽屉支架板	Drawer Support Plate
01 711-23	1	前板盖板	Front Trimming
01 711-24	1	后盖板	Back Guard
01 711-26	5	工作台支架垫	Table Support
01 711-28	1	电脚板	Electric Circuit Protection Box
01 711-32	1	磁铁	Pipe
01 711-34	1	工作台板支架杆	Table Board Support Rod
01 711-35	1	工作台上翻限位钩	Table Tilt Up Hook
01 711-38	1	鞋子保护罩	Guard For Wheel
01 711-40	1	机架铁块	Belt Guard
01 711-41	1	保护罩	Electrically Controlled Box Support
01 711-42	2	前轮支架块	Front Wheels Support Square
01 711-43	2	后轮支架板	Rear Wheels Support Plate
01 712-06	1	边接转向节	Ball Joint
01 714-03	1	桌控台板	Console Table Board
01 714-07	3	文器托架	Support Bracket
01 714-08	1	锁定手柄	Toggle Fastener
01 714-09	1	连接件日	Fastener Latch
01 714-13	1	磁铁块	Magnet Block
01 714-17	2	上合叶	Upper Hinge
01 714-18	2	下合叶	Lower Higer
01 714-20	2	螺线锁钉	Threaded Pin
01 715-07	5	螺栓	Stud
01 719-12	1	锁扣	Switch Bracket
01 719-13	1	行程开关	Micro Switch
01 782-05/03	1	泡沫保护垫	Protection Mousse
01 782-14/01	1	桌控工作台板	Table Board
01 782-15/01	1	穿线杆	Threading Hook Bar
01 782-15/02	1	线轴支架块	Spool-Holder Plate
01 785-35	1	托块	Proximity Switch Support
01 PLASTIC25	10	轮套	Tubular Ring
01 PLASTICQ50	4	反转轮	Turning Wheel
01 AZ7120	1	脚踏开关	Limit Switch
01 002201.00	1	抽屉	Drawer



Page2 马达组件 (Motor Sub-assembly)

Number	Quantity	名称	Name
02 718-04	1	同步器托架	Synchronizer Bracket
02 718-08	1	传动器	Synchronizer
02 718-09	1	皮带轮	Timing Belt-Pulley
02 718-10	1	同步器夹	Synchronizer Holder Clamp
02 782-01	1	步进马达连接板	Unit Motor Rest Base
02 782-02	1	步进机架	Unit Motor Support
02 782-03	1	步进马达	Unit Motor
02 782-04	1	进口电机	EFKA Motor
02 782-05	1	同步小齿轮	Motor Synchronizing Wheel
02 782-06	1	同步臂5	With Ambulacrurum
02 782-07	1	同步臂3	With Ambulacrurum
02 782-08	1	电机连接块	Junction Piece
02 782-09	1	电机连接铁板	Driving Motor Rest Base
02 782-10	1	电机连接板	Driving Motor Support
02 720-24	1	铝同步轮	Main Synchronizing Wheel



# Page3 传动组件 (Transmission Module)

Number	Quantity	名称	Name
03 720-01	1	齿轴同步带	With Ambulacrur
03 720-02	1	底座	Bed
03 720-03	1	轴套	Bushing
03 720-04	1	下凸轴轴	Lower Cam Shaft
03 720-05	1	传动齿轮	Driver Gear
03 720-06	1	隔离套	Spacer
03 720-07	1	装载凸轮	Threadloader Cam
03 720-08	1	提升凸轮	Shread Lifting Cam
03 720-09	1	针轴短偏心轮	Shich Shortening Eccentric
03 720-10	1	挡圈	Set Collar
03 720-11	1	下总轴	Lower Main Shaft
03 720-12	1	主动齿轮	Driver Gear
03 720-13	1	总管供轴偏心轮	Main Feed Eccentric
03 720-14	1	下正时皮带轮	Lower Timing Belt Pulley
03 720-16	1	底座	Bottom Cover
03 720-17	4	皮垫	Support Pad
03 720-18	4	减震垫圈	Rubber Insulator
03 720-19	4	隔离套	Spacer
03 720-20	4	垫圈	Washer
03 720-24	1	皮带轮凸缘	Pulley Flange
03 720-25	1	隔离套	Spacer
03 720-28	1	止动轴环	Looper Wheel Stop Collar
03 730-02	1	供轴提升偏心轮	Feed Lift Eccentric
03 741-02	1	聚力驱动轮	Tension Drive Cam
03 745-02	1	履带带针凸轮	Pull Off Finger Cam
03 785-36	1	接近开关托架	Proximity Switch Support
03 785-38	1	下凸轴轴	The Proximity Switch Induces The Head
03 785-57	2	接近开关	Proximity Switch
03 TLA1010Z	4	滚珠轴承	Needle Bearing
03 601.06001.2RS	2	滚珠轴承	Ball Bearing
03 601.06003.2RS	7	滚珠轴承	Ball Bearing
03 601.63003.2RS	1	滚珠轴承	Ball Bearing
03 IN5	1	气嘴	Support Stud
03 SM-IN3	1	气嘴	Support Stud



Page4 送料机构 (Feed Mechanism)

Number	Quantity	名称	Name
04 2027	2	挡圈	Collar
04 2067	1	挡圈	Clamp Collar
04 3035	1	弹簧连接轴	Guiding Slit
04 10-32	1	隔高垫圈	Spacer
04 720-13	1	总管供给偏心轮	Main Feed Eccentric
04 720-22	1	弹簧	Spring
04 720-23	1	圆螺母	Ring Nut
04 721-02	1	球点调节架	Stitch-Lengthner Support
04 721-03	4	滑环	Link
04 721-04	1	短轴	Stud
04 721-05	1	短轴	Stud
04 721-06	1	长针控制杆	Stitch-Lengthner Control Lever
04 721-07	1	调节偏心连杆	Stitch-Lengthner Connecting Rod
04 721-08	1	长针基轴	Stitch-Lengthner Pivot Shaft
04 721-09	1	铰链销钉	Hinge Stud
04 721-10	1	销块	Clamp Block
04 721-11	1	长针控制杆	Stitch-Lengthner Control Lever
04 722-06/1	1	上送布牙控制杆	Control Lever
04 730-02	1	供给提升偏心轴	Feed Lift Eccentric
04 730-03/02	1	下送布牙控制连杆	Feed Lift Connecting Rod
04 730-04	2	销轴	Roller
04 730-05	1	供给送料运载棒	Feed Dog Carrier Bar
04 730-06	1	供给送料固定器	Feed Dog Holder
04 730-07	1	高度调整螺钉	Feed Dog Height Adjustment Screw
04 730-08	1	供给送料螺钉	Feed Dog Screw
04 730-09	1	销轴	Stud
04 730-10	1	下送布牙架	Feed Dog Fork
04 730-11	1	铰链销钉	Hinge Stud
04 730-12	1	压脚驱动轴	Feed Drive Rock Shaft
04 730-13	1	压脚控制轴	Foot Control Lever
04 730-14	1	圆螺母	Ring Nut
04 743-04	1	挡圈	Collar
04 752-02	1	驱动轴	Drive Shaft, Foot Movement
04 752-03	1	叉杆	Fork Lever
04 752-29	1	丝杆(Φ×220)	Connecting Rod
04 603.06.00	1	关节轴承	Ball Joint
04 602.06.09	1	滚针轴承	Needle Bearing





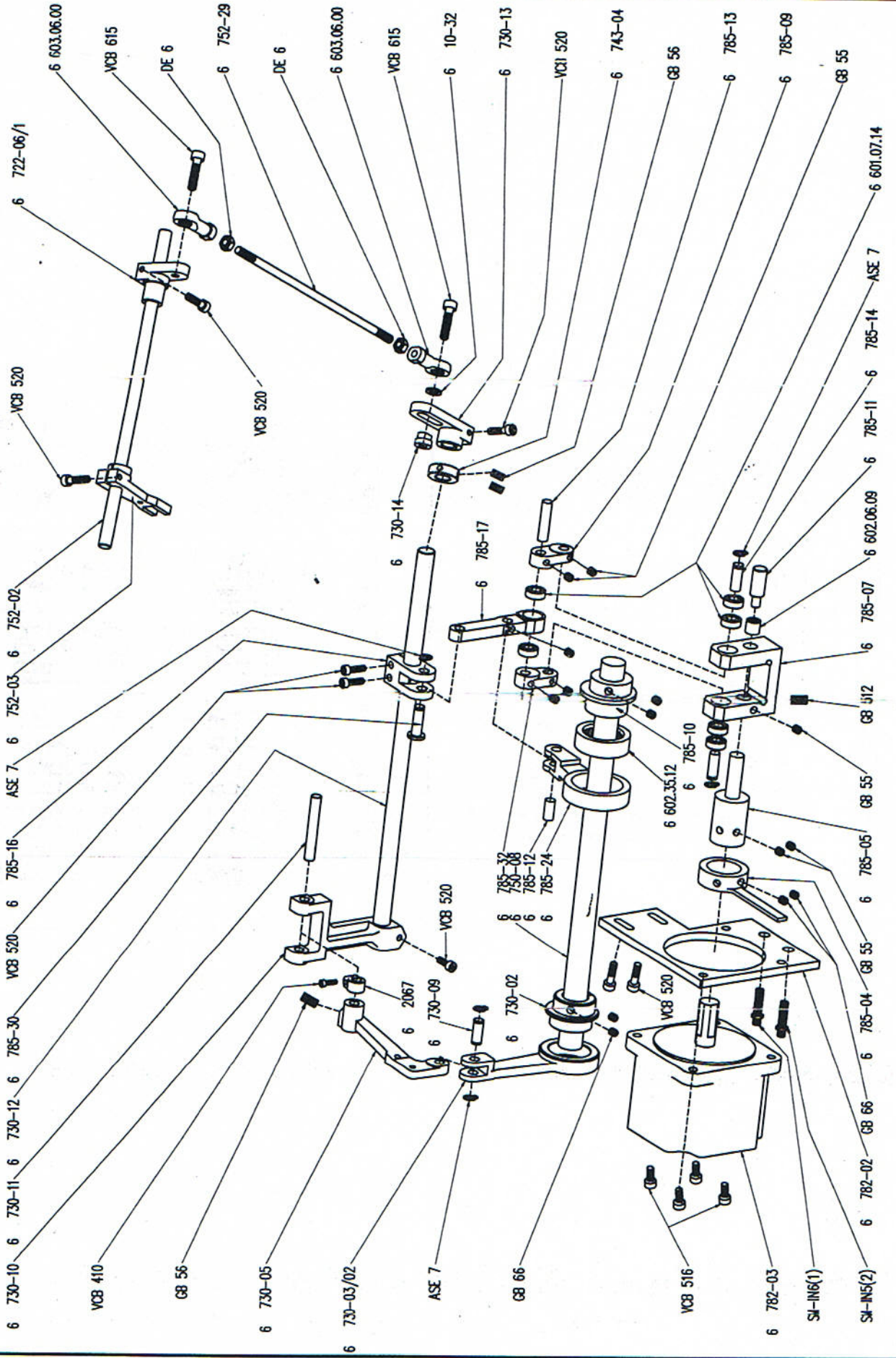
# Page5 正反针距组件 (The Por And Con Needle Is aprat From The Module)

Number	Quantity	名 称	Name
05 2027	1	挡圈	Collar
05 720-09	1	针筒短偏心轮	Stitch Correction Eccentric
05 720-30	1	凸缘	Flange
05 721-02	1	支点调节架	Loose Support
05 721-03	4	滑环	Link
05 721-04	1	短轴	Stud
05 721-05	1	短轴	Stud
05 722-02	1	针枝正边接杆	Stitch Correction Connecting Rod
05 722-03	1	针枝正控制杆	Stitch Correction Lever
05 722-04	1	短轴	Hinge Stud
05 722-05	1	放线支架控制轴	Loose Support Shaft
05 722-07	1	控制轴	Control Shaft, Stitch Correction Lever
05 722-08	1	针枝正杠杆	Stitch Correction Lever
05 722-09	1	镊子支持杆	Counter Lever
05 724-05	1	针转化控制杆	Stitch Inversion Control Lever
05 724-06	1	耳轴支架	Trunnion Mounting
05 724-07	1	铰链销钉	Hinge Pin
05 724-09	1	汽缸	Microcylinder
05 724-11	1	铰链销钉	Fork Pin
05 724-11/1	1	叉	Cylinder Fork
05 724-47	2	调节接头	Regulator φ5MA
05 730-04	2	销钉	Ring
05 755-20/1	1	针枝正控制杆	Stitch Correction Control Lever
05 752-29/1	1	丝杆 (06 × 220)	Connecting Rod
05 601.00625.2Z	1	滚珠轴承	Ball Bearing
05 602.06.09	1	滚针轴承	Needle Bearing
05 602.35.12	1	滚珠轴承	Needle Bearing
05 603.06.00	2	滚珠轴承	Ball Joint



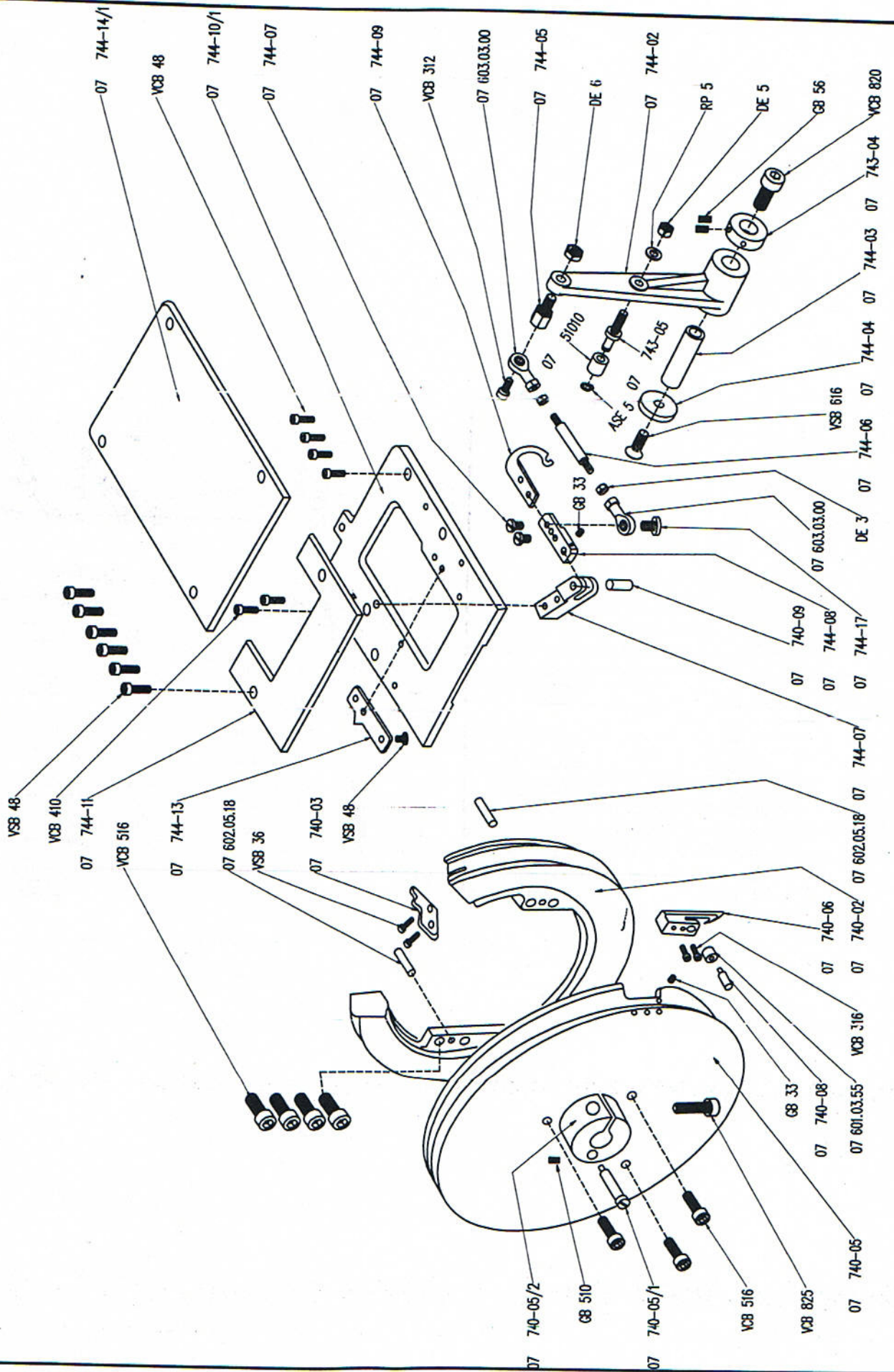
Page6 步进马达、送料组件 (Unit Motor Feeding Module)

Number	Quantity	名称	Name
6	1	夹钳	Clamp Collar
6	1	隔高垫圈	Spacer
6	1	控制杆	Control Lever
6	1	供给提升偏心轮	Feed Lift Eccentric
6	1	供给提升连接架	Feed Lift Connecting Rod
6	1	供给挡块运载棒	Feed Dog Carrier Bar
6	1	短轴	Stud
6	1	供给挡块叉	Feed Dog Fork
6	1	铰链销钉	Hinge Stud
6	1	压脚驱动轴	Feed Drive Rock Shaft
6	1	压脚控制杆	Foot Control Lever
6	1	圆螺母	Ring Nut
6	1	挡圈	Collar
6	1	上主轴	Upper Main Shaft
6	1	驱动轴	Drive Shaft, Foot Movement
6	1	叉杆	Fork Lever
6	1	丝杆(Φ×220)	Connecting Rod
6	1	步进机动铁块	Unit Motor Support
6	1	步进马达	Unit Motor
6	1	凸轮连接杆	Close Sensing Head
6	1	凸轮连接棒	Motor Drive Shaft
6	1	连接支架	Stitch-Lengthener Support
6	1	销轴	Support Chain Link
6	1	提升偏心轮	Feed Lift Eccentric
6	1	铰链销钉	Axis
6	1	短轴	Sells the axis
6	1	销钉	Sells the axis
6	1	短轴	Axis
6	2	销钉	Axis
6	1	短轴	Stitch Correction Lever
6	1	销钉	Supports The Connecting Rod
6	1	长针控制杆	Stitch Correction Connecting Rod
6	1	运载连接杆	Truncation
6	1	压脚驱动轴	Support Chain Link
6	1	压脚驱动轴	Ball Bearing
6	1	压脚驱动轴	Ball Bearing
6	6	压脚驱动轴	Needle Bearing
6	6	压脚驱动轴	Needle Bearing
6	6	压脚驱动轴	Needle Bearing
6	6	压脚驱动轴	Needle Bearing
6	2	压脚驱动轴	Ball Joint
6	1	气臂	Support Stud
6	1	气臂	Support Stud



# Page 7 组装载组件 (The Assembly Cuts The Module)

Number	Quantity	名称	Name
07 51010	1	滚针轴承	Needle Bearing
07 740-02	1	固定轮	Stationary Wheel
07 740-03	1	线导向板	Thread Guide Plate
07 740-05	1	转动轮	Threadloader Wheel
07 740-05/1	1	装嵌凸轴销钉	Wheel
07 740-05/2	1	悬球壳大盘心	Detachable Hub
07 740-06	1	旋转钩	Rotary Lock
07 740-08	1	滑轨轴	Sheave Shaft
07 740-09	1	嵌合销	Dowel Pin
07 743-04	1	圆环	Collar
07 743-05	1	轴子螺柱	Roller Stud
07 744-02	1	装嵌杆	Threadloader Lever
07 744-03	1	嵌轴短轴	Hinge Stud
07 744-04	1	垫圈	Washer
07 744-05	1	螺钉螺柱	Screw Stud
07 744-06	1	丝杆 (M3 x 50)	Connecting Rod
07 744-07	1	嵌轴叉	Hinge Fork
07 744-08	1	固定器	Holder
07 744-09	1	送料叉	Threadloader
07 744-10/1	1	针板支架框	Throat Plate Support Frame
07 744-11	1	左盖板	Left Hand Cover Frame
07 744-13	1	分线叉	Thread Separator
07 744-14/1	1	右盖板	Right Hand Cover Plate
07 744-17	1	螺钉	Screw
07 601.03.55	1	滚珠轴承	Ball Bearing
07 602.05.18	2	销钉	Dowd Pin
07 603.03.00	2	M3关节轴承	Ball Joint

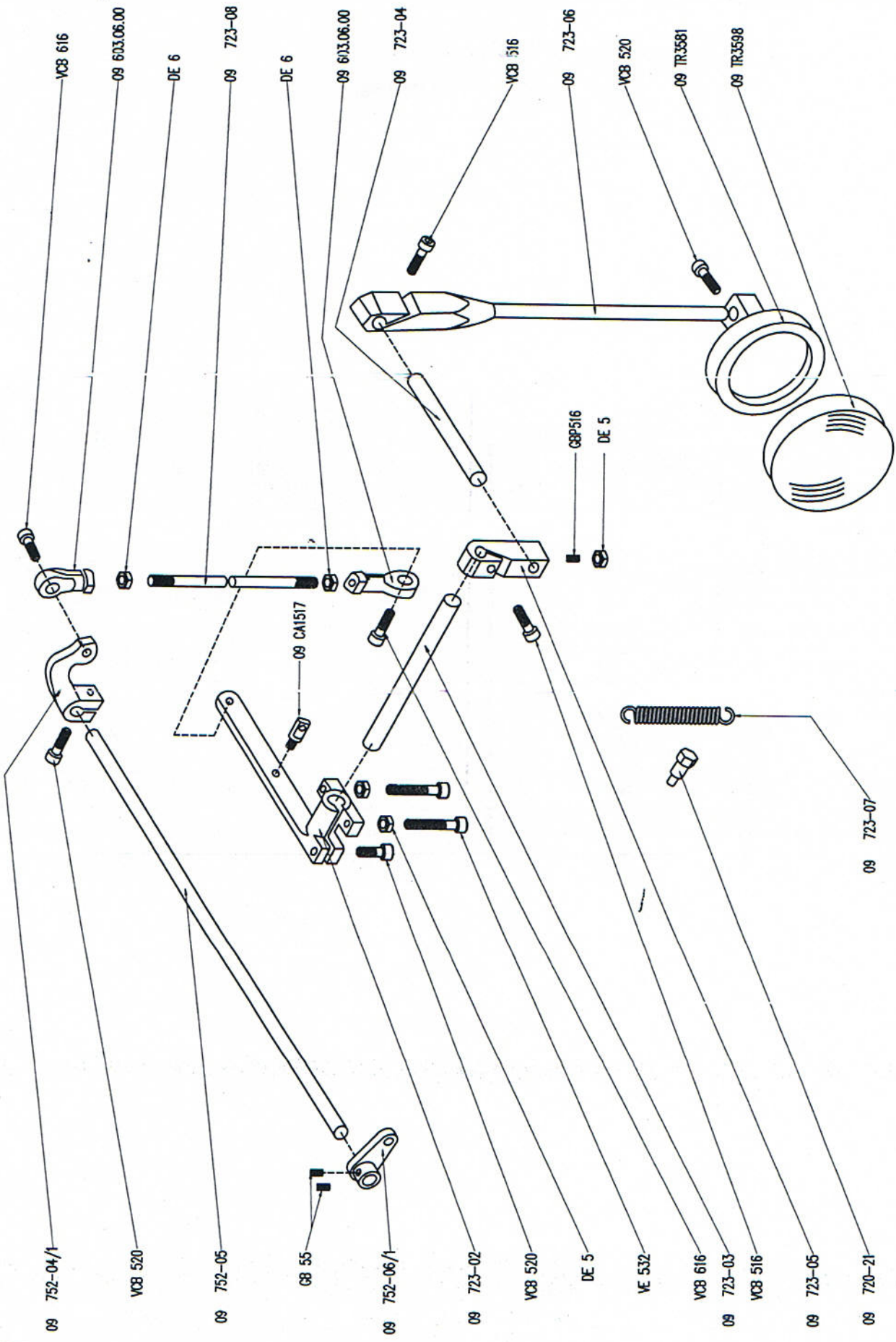


Number	Quantity	Name	Number	Quantity	Name
08 2027	1	Collar	08 745-07	1	调整球环
08 51010	1	Needle Bearing	08 745-08	1	滚珠轴承
08 721-09	1	Hinge Tude	08 745-09	1	滚珠球环
08 741-02	1	Tension Drive Cam	08 745-10	1	连接轴
08 741-03	1	Tension Drive Lever	08 745-11	1	护轴头
08 741-06/2	1	Spacer	08 745-12	1	垫圈
08 742-02	1	Tension Support Bracket	08 745-13	1	扭簧弹簧
08 742-03	1	Right Hand Tension Prong	08 753-12	1	卡爪
08 742-03/3	1	Plate	08 754-12	1	螺帽
08 742-03/4	1	Plate	08 601.00623.2Z	1	螺母
08 742-04	1	Left Hand Tension Prong	08 602.05.10	1	滚珠轴承
08 742-05	1	Spring Tensioning Drum	08 602.30.078.00	1	滚珠轴承
08 742-06	1	Torsion Spring	08 603.03.00	4	垫圈
08 742-07	1	Hinge Shaft			四关节轴承
08 742-08	1	Thread Pusher Stud			
08 742-09	1	Spring			
08 742-10	1	Torsion Spring			
08 742-11	1	Thread Pusher Hook			
08 742-12	1	Thread Holder Hook			
08 742-13	2	Dowel Bushing			
08 742-14	1	Thread Support Plate			
08 742-15	1	Connecting Rod			
08 742-16	1	Thiead Wiping Finger			
08 742-17	1	Stop Lever			
08 742-18	1	Bracket			
08 742-19	2	Stop Screw			
08 742-20	1	Stop Screw Spring			
08 742-21	2	Hex.Soc.Flathd.Cap Screw			
08 743-02	1	Thread Lifting Lever			
08 743-03	1	Hinge Stud			
08 743-04	1	Collar			
08 743-05	1	Roller Stud			
08 743-06	1	Connecting Rod			
08 743-07	1	Thread Lifter Connecting Rod			
08 743-08	1	Thread Lifting Support			
08 743-09	1	Thread Lifting Finger Shaft			
08 743-10	2	Thread Lifter			
08 745-02	1	Thread Shifter Rod			
08 745-03	1	Needle Guard Carrier Shaft			
08 745-04	1	Thread Shifter Control			





Number	Quantity	名称	Name
09 720-21	1	螺纹螺栓	Screw Stud
09 723-02	1	曲柄连接杆	Knee Lifter Connection Lever
09 723-03	1	曲柄轴	Knee Lever Pivot Shaft
09 723-04	1	杆轴	Lever Stud
09 723-05	1	调整接头	Adjusting Joint
09 723-06	1	曲杆	Knee Rod Lever
09 723-07	1	螺旋弹簧	Coil Spring
09 723-08	1	连接杆	Connecting Rod
09 752-04/1	1	脚踏提升杆	Foot Lifter Lever
09 752-05	1	脚踏提升轴	Foot Lifter Shaft
09 752-06/1	1	提升曲柄	Lifting Crank
09 603.06.00	2	关节轴承	Ball Joint
09 CA1517	1	导轨螺栓	Thread Guiding Slit
09 TR 3581	1	提升板	Knee Lever
09 TR 3598	1	提升板垫片	Knee Lever Pad

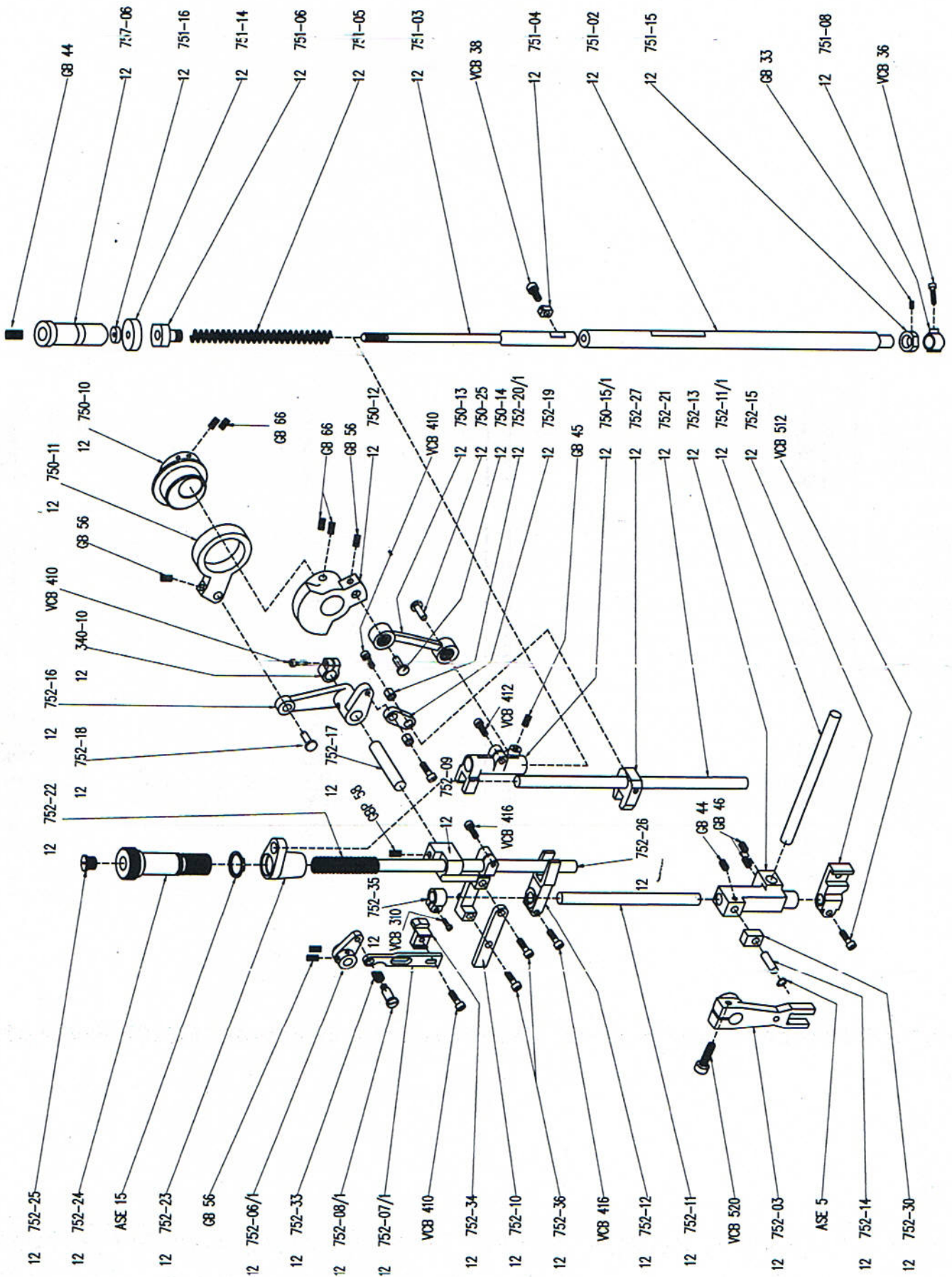


Number	Quantity	名称	Name
10 720-01	1	同步带	With Ambulacrum
10 720-05/2	1	传动齿轮	Driven Gear
10 720-06/1	1	隔套	Spacer
10 720-10	1	挡圈	Collar
10 720-12/2	1	主动小齿轮	Driving Gear
10 724-29	2	撑线夹	Hose Clampø4
10 750-03/1	1	机头盖	Head Front Cover
10 750-04	1	半圆盖	Cover Plate
10 750-06	1	上针棒套	Upper Needle Bar Bushing
10 750-07	1	下针棒套	Lower Needle Bar Bushing
10 750-08	1	上主轴	Upper Main Shaft
10 750-09	1	上正时皮带轮	Upper Timing Belt Pulley
10 750-10	1	步行压脚提升偏心轮	Walking Presser Lifting Eccentric
10 750-12	1	针棒前柄	Needle Bar Crank
10 750-16	1	手轮	Hand Wheel
10 750-17	1	手轮螺钉	Hand Wheel Screw
10 750-18	1	下凸轴轴	Upper Cam Shaft
10 750-19	1	上聚环驱动轮	Upper Looper Drive Cam
10 750-20	1	堵塞	Plug
10 750-22	1	正时轴环	Timing Collar
10 750-26	1	入口盖	Access Cover
10 750-27	1	入口盖	Access Cover
10 750-32	1	开入螺钉板	Pillate With Apening For Access To Gears Screws
10 754-04	1	引导杆	Lever Guide
10 754-05	2	隔套	Spacer
10 760-06	1	线分线器	Thread Guide
10 785-50	1	操作盘	Control Panel
10 PLASIIC 25	5	凸缘管	Flanged Tube
10 SA7-34	1	管头套	Arrow Plate
10 TLA0810Z	2	滚珠轴承	Needle Bearing
10 ZR322L	2	三星同步带	Tool Hed Belt
10 601.06000.2RS	1	滚珠轴承	Ball Bearing
10 601.06003.2RS	4	滚珠轴承	Ball Bearing



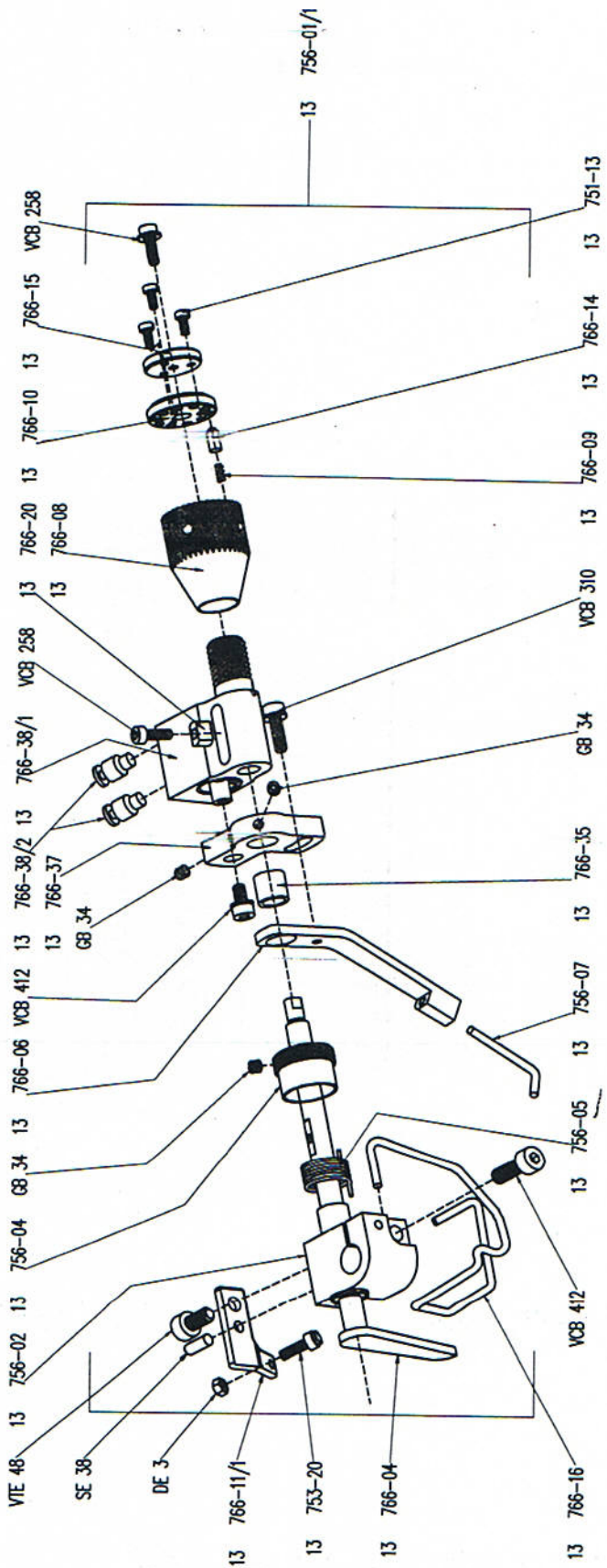
Page 11 针棒/压脚组件 (The Needle Stick/Presses The Foot Module)

Number	Quantity	名称	Name	Number	Quantity	名称	Name
12 340-10	1	大圈	Clamp Collar	12 752-26	1	导向杆	Guide Bar
12 750-10	1	步行压脚提升偏心盘	Walking Presser Lifting Eccentric	12 752-27	1	压脚提升车的联杆	Foot-Lifter Drawrod
12 750-11	1	连接销	Connecting Link	12 752-30	1	弹簧	Slide Block
12 750-12	1	针棒曲柄	Needle Bar Crank	12 752-33	1	凸轮	Spring
12 750-13	1	轴连接销	Connection Link With Bearing	12 752-34	1	凸轮圈	Cam Block
12 750-14	1	销	Hinge Pin	12 752-35	1	夹圈	Clamp Collar
12 750-15/1	1	大圈	Needle Bar Guide	12 752-36	1	支持锚钉	Support Anchor Screw
12 750-25	1	轴销	Hinge Pin	12 757-06	1	可调节帽	Adjustable Cap
12 751-02	1	针棒	Needle Bar Rod				
12 751-03	1	织布棒	Fabric-Holder Rod				
12 751-04	1	侧块	Side Block				
12 751-05	1	侧块弹簧	Needle Bar Spring				
12 751-06	1	针棒夹	Needle Bar Clamp				
12 751-08	1	针棒夹	Needle Bar Clamp				
12 751-14	1	垫圈	Cushion Ring				
12 751-15	1	针棒螺母	Needle Stop Collar				
12 751-16	1	垫圈	Cushion Ring				
12 752-03	1	叉杆	Fork Lever				
12 752-06/1	1	提升曲柄	Foot-Lifter Lever				
12 752-07/1	1	脚踏提升偏心环	Presser Feet Lifting Link				
12 752-08/1	1	一字销	Shoulder Screw				
12 752-09	1	压脚提升支架	Foot-Lifter Bracket				
12 752-10	1	引导杆	Guide				
12 752-11	1	侧块	Slide Bar				
12 752-11/1	1	侧块	Slide Bar				
12 752-12	1	导叉	Guide Fork				
12 752-13	1	压脚驱动轴套	Presser Foot Drive Bushing				
12 752-14	1	轴套	Stud				
12 752-15	1	步行压脚驱动架	Walking Presser Holder				
12 752-16	1	曲柄	Belt Crank				
12 752-17	1	轴销	Pivot Shaft				
12 752-18	1	轴销	Hinge Pin				
12 752-19	1	轴销	Link				
12 752-20/1	2	垫圈	Collar				
12 752-21	1	压脚杆	Presser Bar				
12 752-22	1	弹簧	Spring				
12 752-23	1	压力调节阀螺母	Pressure Regulator Nut				
12 752-24	1	压力调节阀	Pressure Regulator Screw				
12 752-25	1	轴套	Plup Screw				

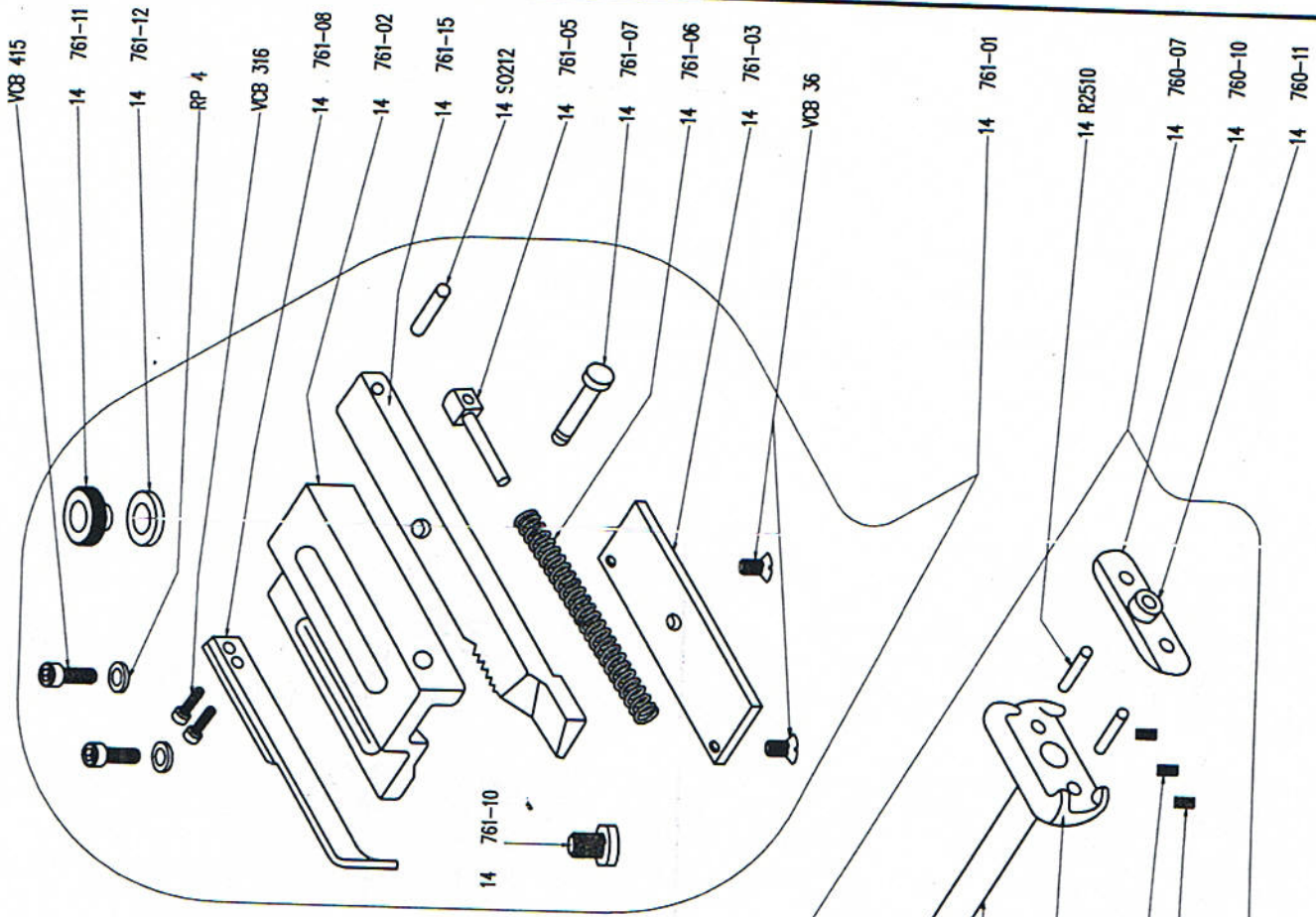
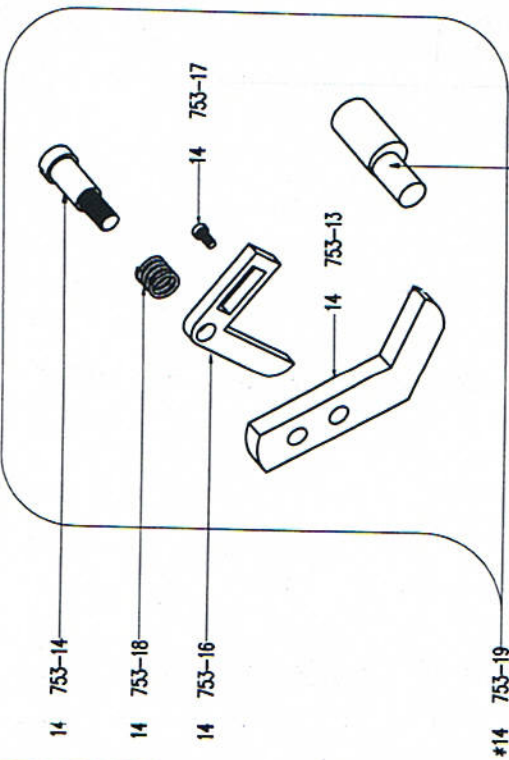


Number	Quantity	名称	Name
13 751-13	1	紧固螺丝	latch wire fastening screw
13 753-20	1	止动螺丝	stop screw
13 756-01	1	送线手滑	stitch slackening assembly with clamp
13 756-01/1	1	送线手滑	stitch slackening assembly with clamp
13 756-02	1	松线轴衬	stitch slackening shaft bushing
13 756-04	1	罩套外套帽	spring housing cap
13 756-05	1	扭簧	torsion spring
13 756-07	1	松线钩	stitch slackening finger
13 766-04	1	松线杠杆	stitch slackening lever
13 766-06	1	松线杆	stitch slackening lever
13 766-08	1	松线调节按钮	stitch slackening adjustment knob
13 766-09	1	罩套	spring for pawl
13 766-10	1	外加圆盘	impressed disc
13 766-11	1	杠杆锁(1)	lever lock
13 766-11/1	1	杠杆锁(2)	lever lock
13 766-14	1	滚珠卡爪	ball pawl
13 766-15	1	垫圈	washer
13 766-16	1	防护手指钩	finger guard
13 766-20	1	松线滑块	Slide
13 766-35	1	套环	axle sleeve
13 766-37	1	包挡块	loose line adjustable shelf
13 766-38	1	螺纹套筒	threaded sleeve
13 766-38/1	1	螺纹套筒	loose line air cylinder
13 766-38/2	2	压接头	elbow pneumatic coupler



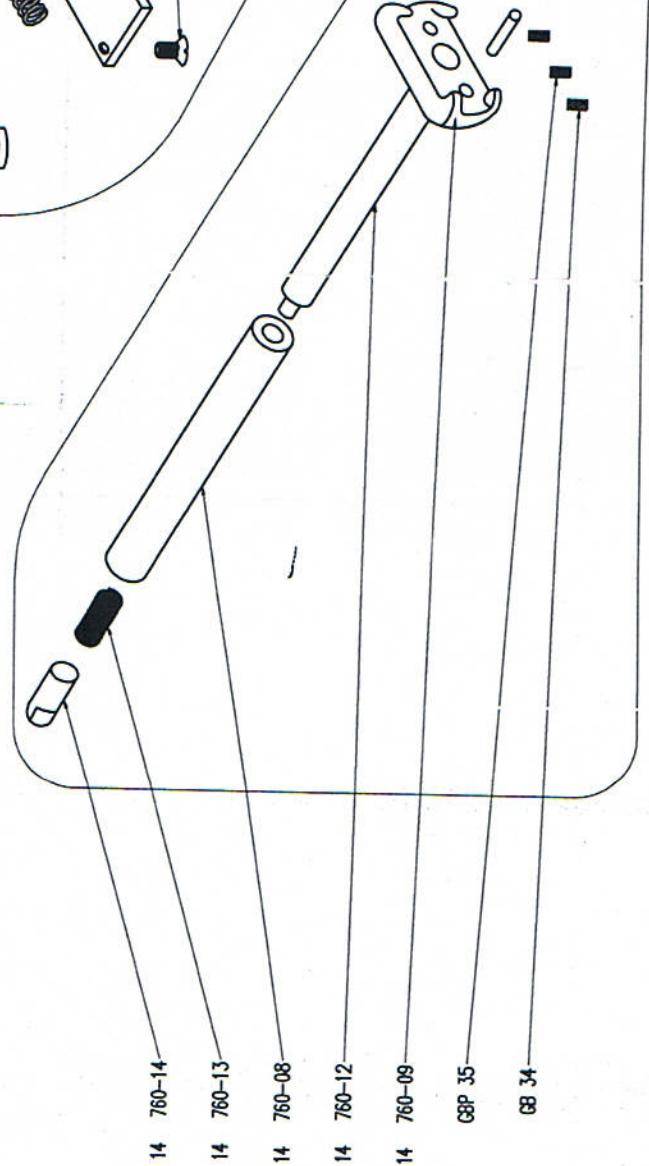


Number	Quantity	名称	Name
14 R2510	1	销钉	Roller
14 S0212	1	销钉	Spring Pin
14 753-13	1	固定线剪叶片	Thread Cutter Guide
14 753-14	1	线剪叶片螺钉	Thread Cutter Screw
14 753-15	1	偏心轴	Eccentric Stud
14 753-16	1	移动线剪叶片	Thread Cutter
14 753-17	1	螺母	Ccrew
14 753-18	1	弹簧	Spring
* 14 753-19	1	剪刀组件	Thread Cutter Assembly
14 760-07	1	线夹	Thread Nipper Assembly
14 760-08	1	鸟套	Guide Sleeve
14 760-09	1	后压板	Rear Pressure Plate
14 760-10	1	前压板	Front Pressure Plate
14 760-11	1	螺母	Nut
14 760-12	1	销钉林开棒	Nipper Release Rod
14 760-13	1	弹簧	Nipper Spring
14 760-14	1	张力帽	Tension Cap
14 761-01	1	定位基组件	Snap Retractable Edge Guide Assembly
14 761-02	1	调节定位支架	Guide Bracket
14 761-03	1	底座盖板	Bottom Cover
14 761-05	1	弹簧引导栓	Spring Guide Point
14 761-06	1	弹簧	Spring
14 761-07	1	球头钉	Push Button For Guide
14 761-08	1	松紧弹簧板	Catch Spring
14 761-10	1	螺纹螺钉	Threaded Block
14 761-11	1	球状调节组	Positioning Control Screw
14 761-12	1	调节螺母垫圈	Positioning Control Filling Piece
14 761-15	1	调节滑动棒	Side Keeps Off Adjusts The Stick



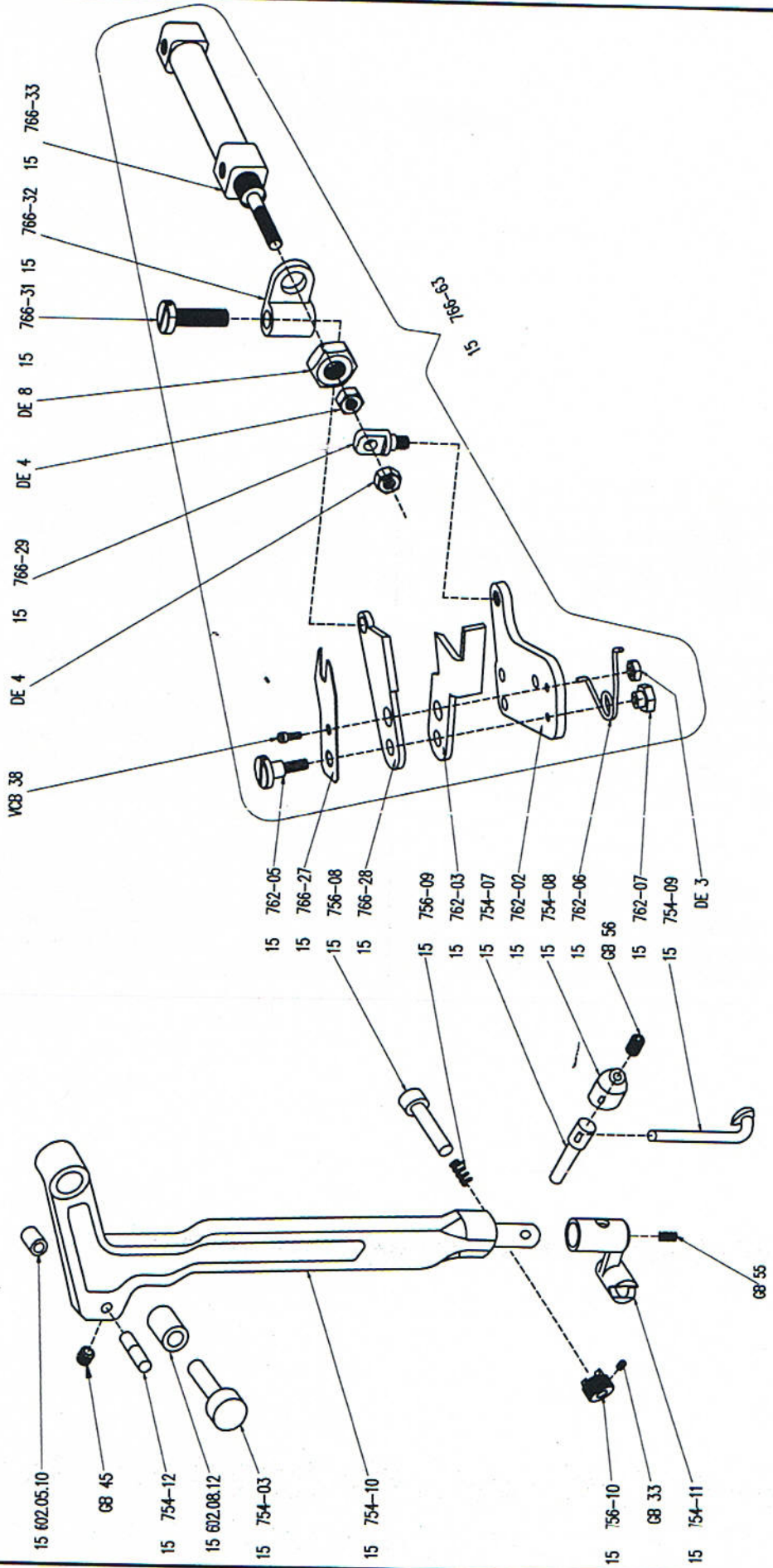
14 761-10

#14 753-19



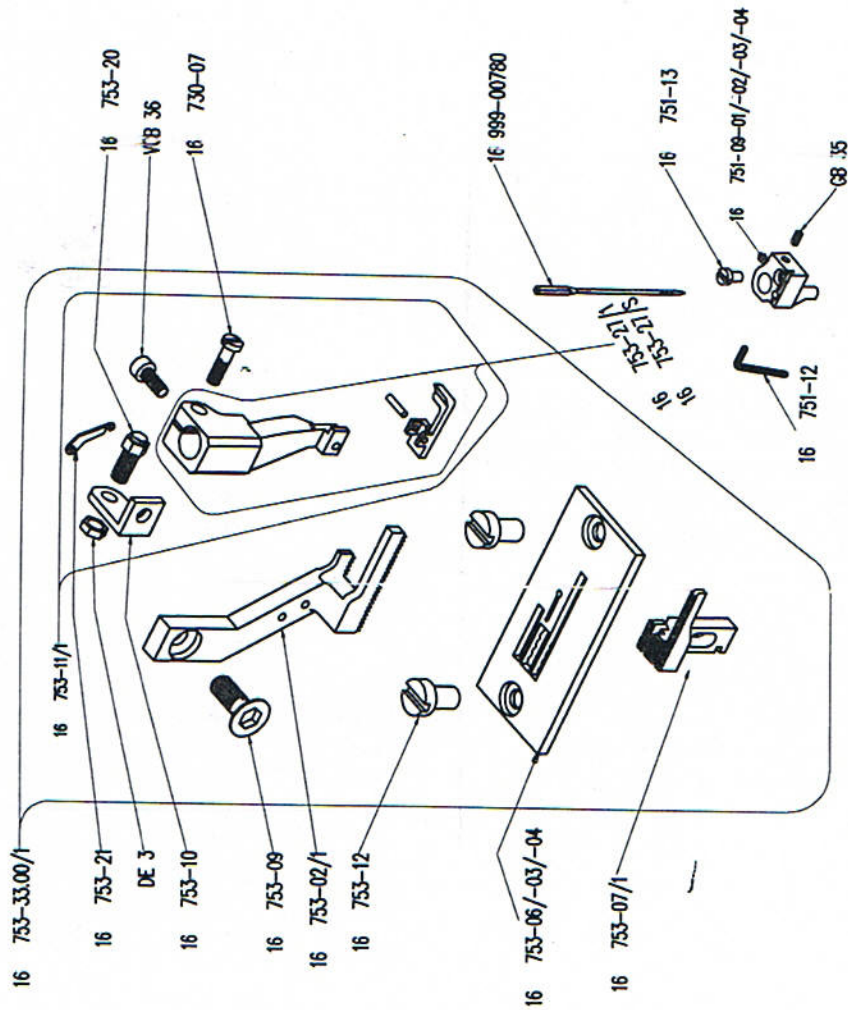
Page 14 上弯线和剪刀组件 (On Curved Line And Scissors Module)

Number	Quantity	名称	Name
15 602.05.10	1	滚珠轴承	Needle Bearing
15 602.08.12	1	滚针轴承	Rollers Bearing
15 754-03	1	铰链螺钉	Hinge Stud
15 754-07	1	帽钩	Cap For Hook
15 754-08	1	固定帽	Upper Loop Holder Cap
15 754-09	1	上线钩	Upper Loop
15 754-10	1	上线螺母	Upper Loop Lever
15 754-11	1	上支架	Upper Loop Support
15 754-12	1	短轴	Stud
15 756-08	1	轴子螺栓	Roller Stud
15 756-09	1	弹簧	Spring
15 756-10	1	控制按钮	Control Knob
15 762-02	1	固定刀片	Stationary Blade
15 762-03	1	可动刀片	Moving Blade
15 762-05	1	一字螺钉	Blade Screw
15 762-06	1	弹簧	Spring
15 762-07	1	螺母	Nut
15 766-27	1	弹簧刀片	Spring Blade
15 766-28	1	死刀片	Moving Blade
15 766-29	1	螺丝	Revolving Screw
15 766-31	1	螺丝	Revolving Carrying Axle
15 766-32	1	支架架	Revolving Support Wrap
15 766-33	1	气缸	Scissors Air Cylinder
15 766-63	1	自动剪刀	Cutters Assembly



# Page 15 定位器、针板和压脚 (Locator、The Needle Board And Presses The Foot)

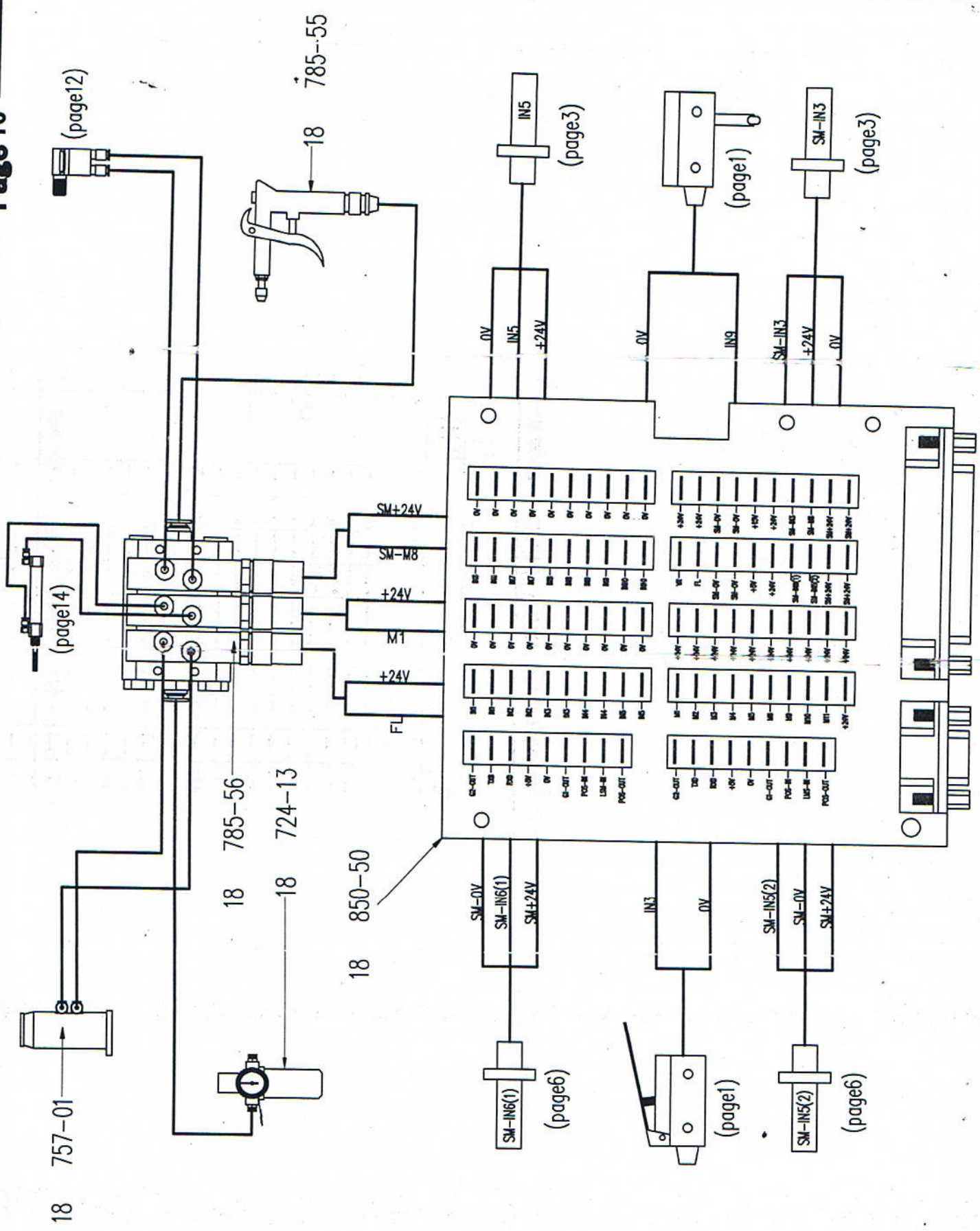
Number	Quantity	名称	Name
16 730-07	1	高度调节螺钉	Screw
16 751-09-01/-02/-03/-04	1	针夹头	Fabric Tessuto Per Ago $\phi$ 90- $\phi$ 100- $\phi$ 110- $\phi$ 125
16 751-12	1	封针	Latch Wire
16 751-13	1	紧固螺丝	Latch Wire Fastening Screw
16 753-02/1	1	送布牙	Walking Presser
16 753-06-03/-04	1	针板	Throat Plate
16 753-07/1	1	下送料挡块	Drop Feed Dog
16 753-09	1	螺钉	Screw
16 753-10	1	止动杆	Adjusting Screw Bracket
16 753-11/1	1	压脚座	Presser Feet Assembly MP
16 753-12	1	针板螺丝	Throat Plate Screw
16 753-20	1	螺钉	Adjusting Screw
16 753-21	1	导线钩	Eye Slit
16 753-27/1	1	压脚座	Presser Feet
16 753-27/S	1	压脚座	Presser Feet Short
16 753-33.00/1	1	压脚座	Sewing Unit MP
16 999-00780	1	压脚座组件	Needle(Specify Size) System780,C90,100,110,125
		机针	



Page 16 电路图和气路图 (Circuit Diagram Friendly Road Map)

Number	Quantity	名称	Name
18 724-13	1	过滤器	Filter Regulator
18 757-01	1	架杆汽缸	Cylinder Assy
18 785-55	1	汽枪	Clean Air-Gun
18 785-56	1	电网	Solenoid Valve
18 850-50	1	线路板	Line Board





18 757-01

(page12)

18 785-56

18 724-13

18 785-55

18 850-50

SM-INS(1)

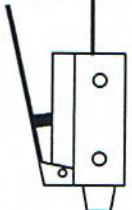
(page6)

SM-0V

SM-INS(1)

SM+24V

(page1)



IN3

0V

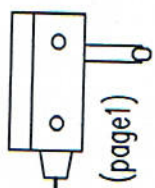
SM-INS(2)

SM-0V

SM+24V

(page6)

(page1)



0V

IN9

SM-INS3

SM-INS3

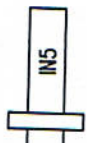
(page3)

0V

IN5

+24V

(page3)



SM+24V

SM-M8

+24V

M1

+24V

FL

