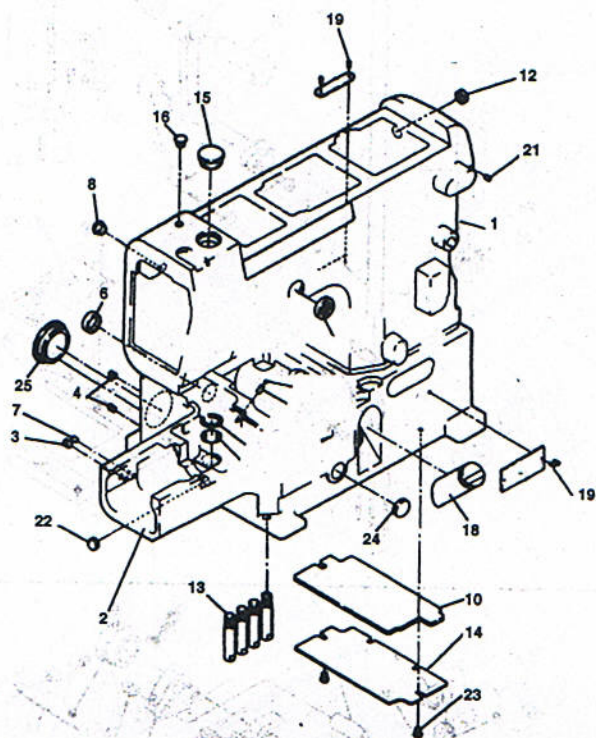
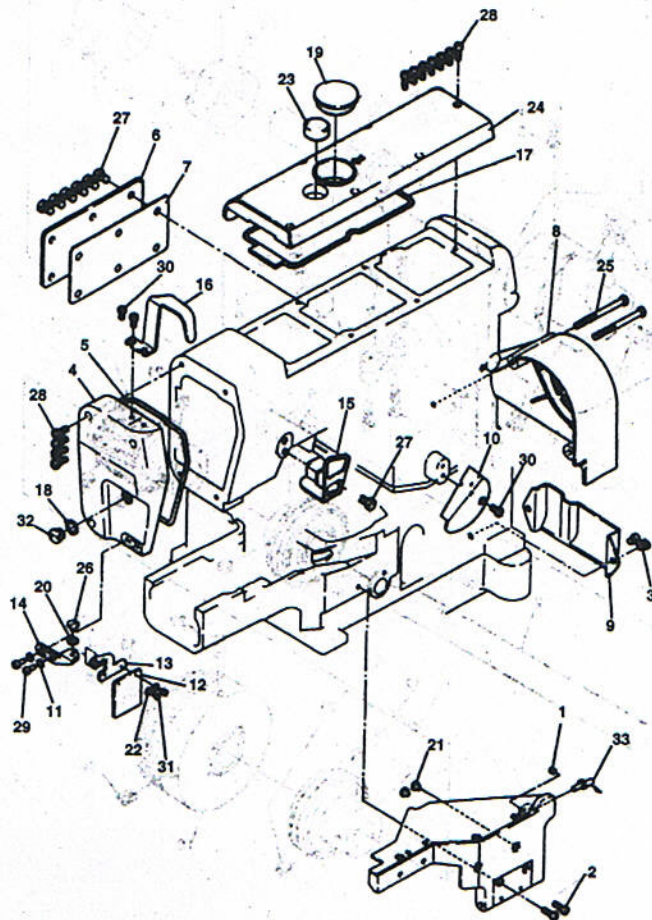
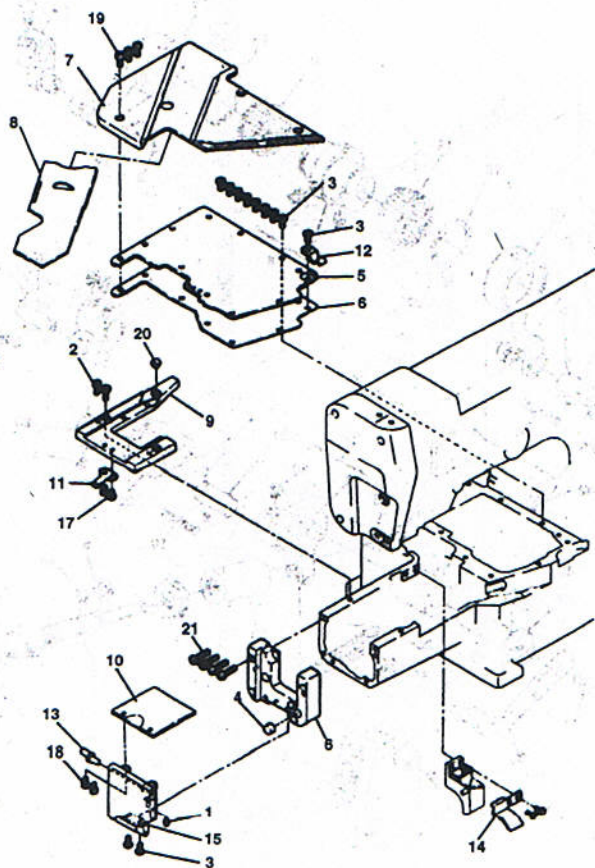
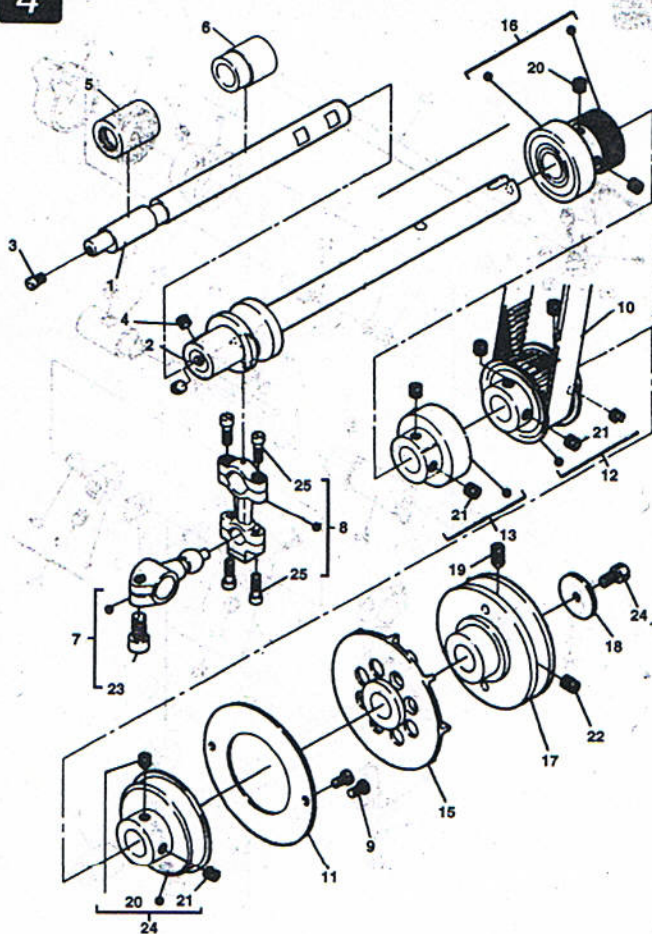
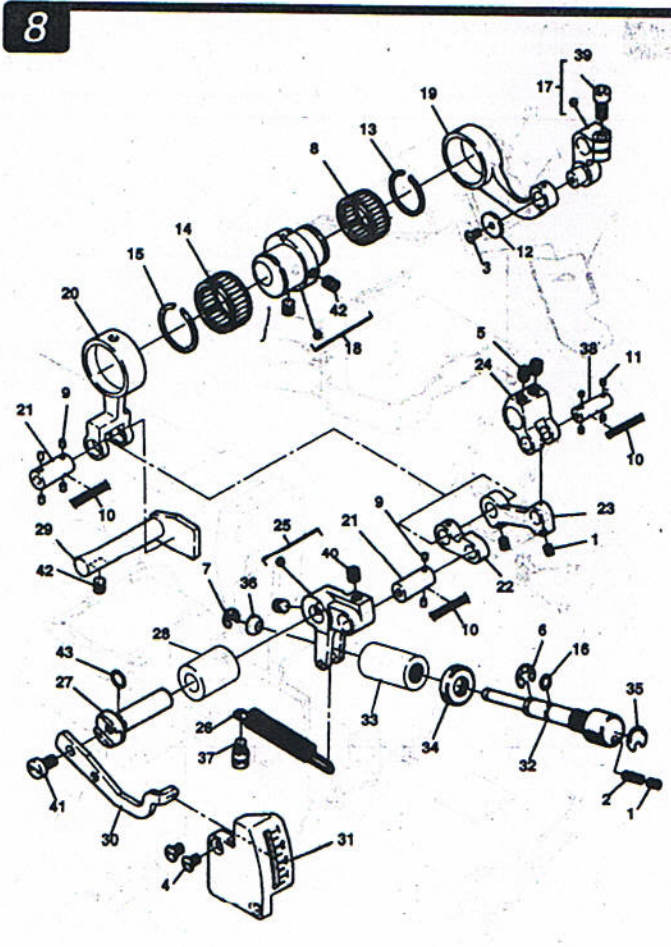
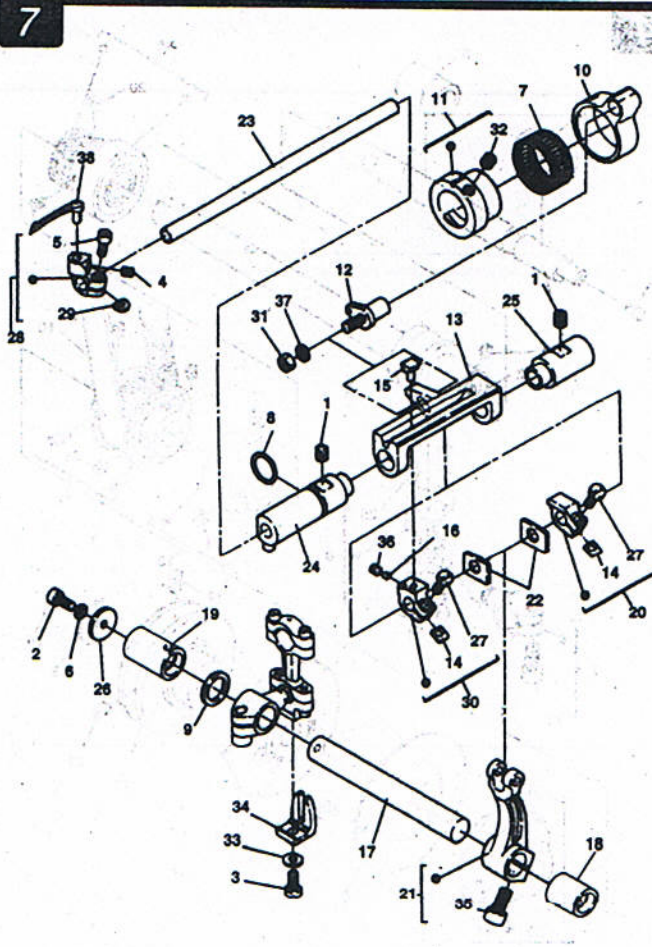
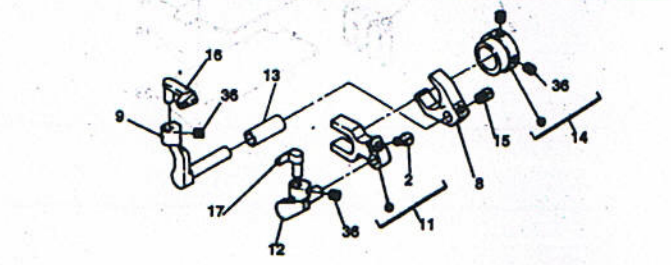
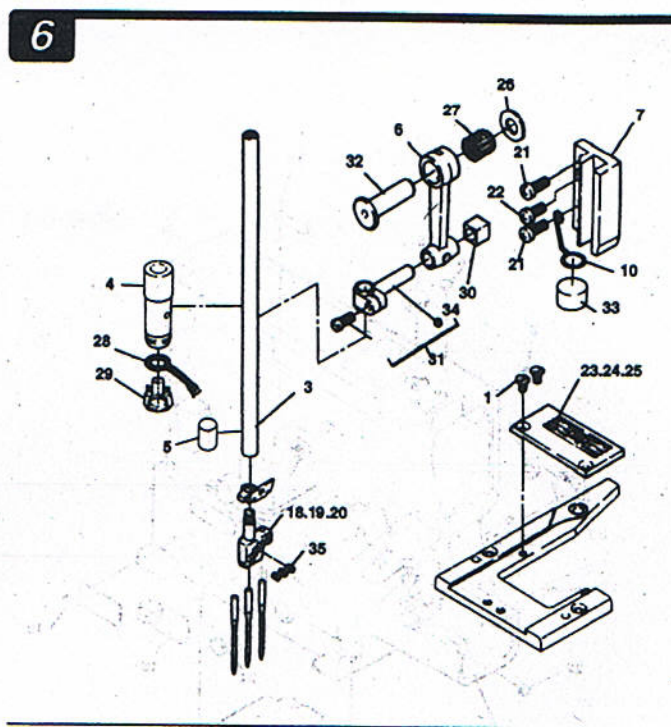
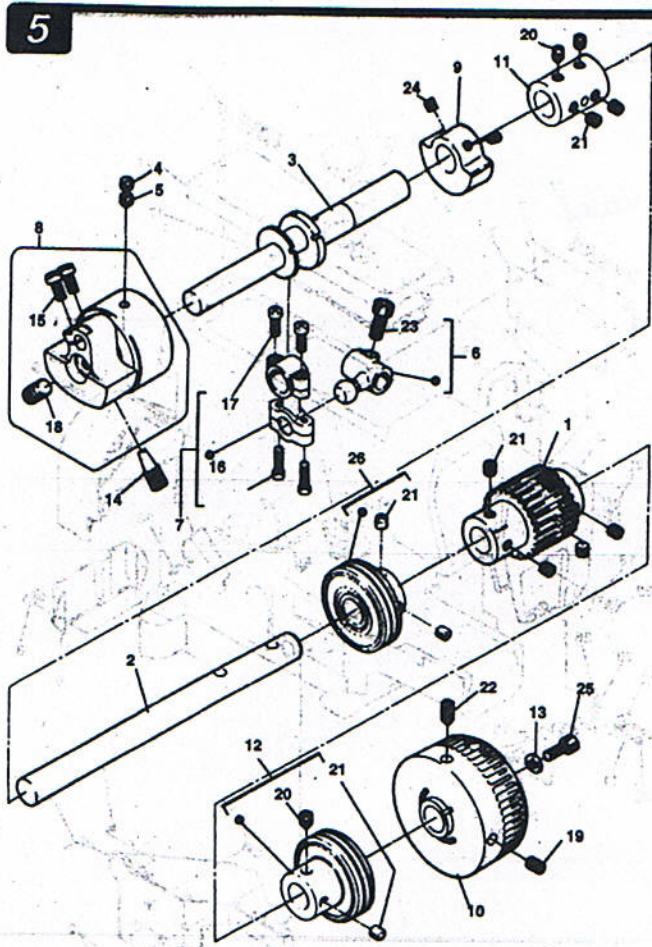


# 600

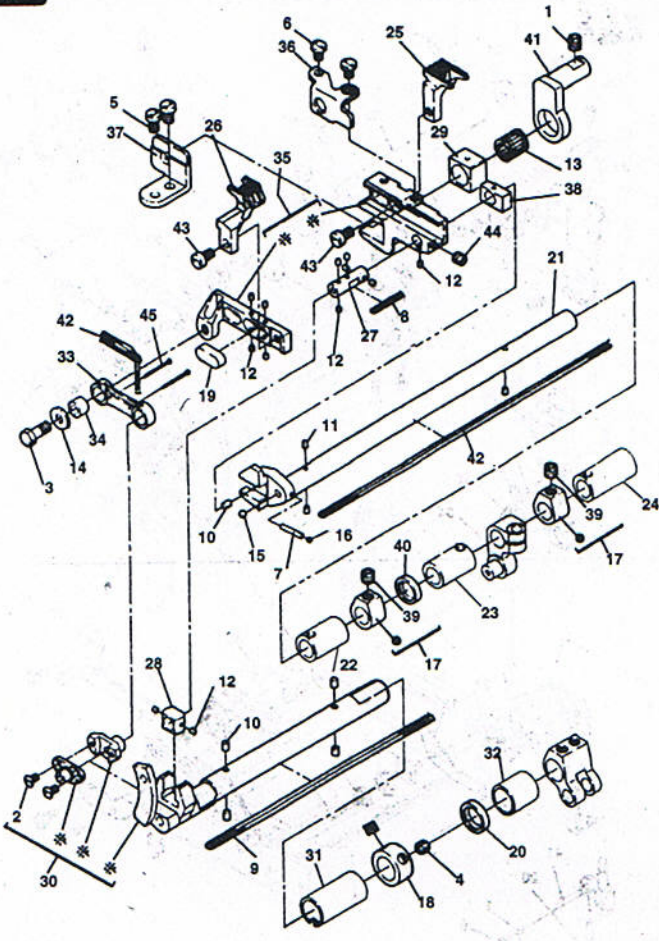
*600 series*

**零件样本**  
**Parts Book**

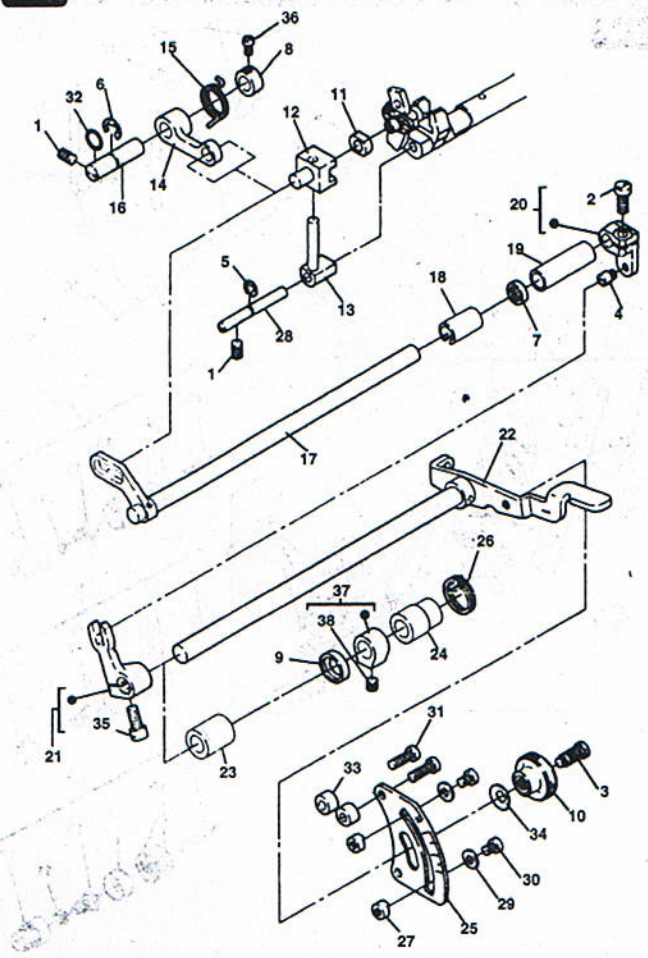
**1****2****3****4**



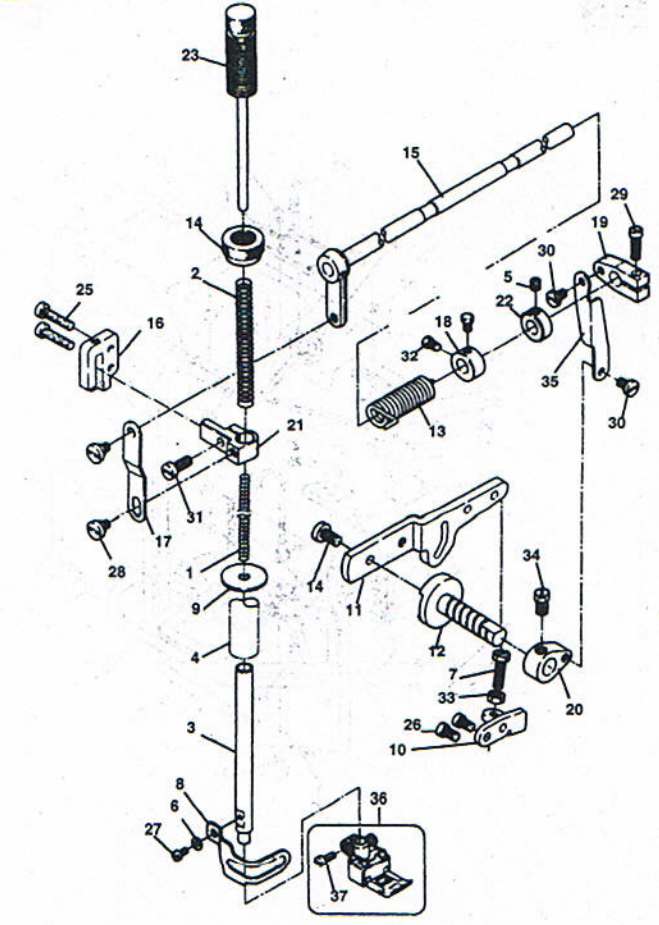
9



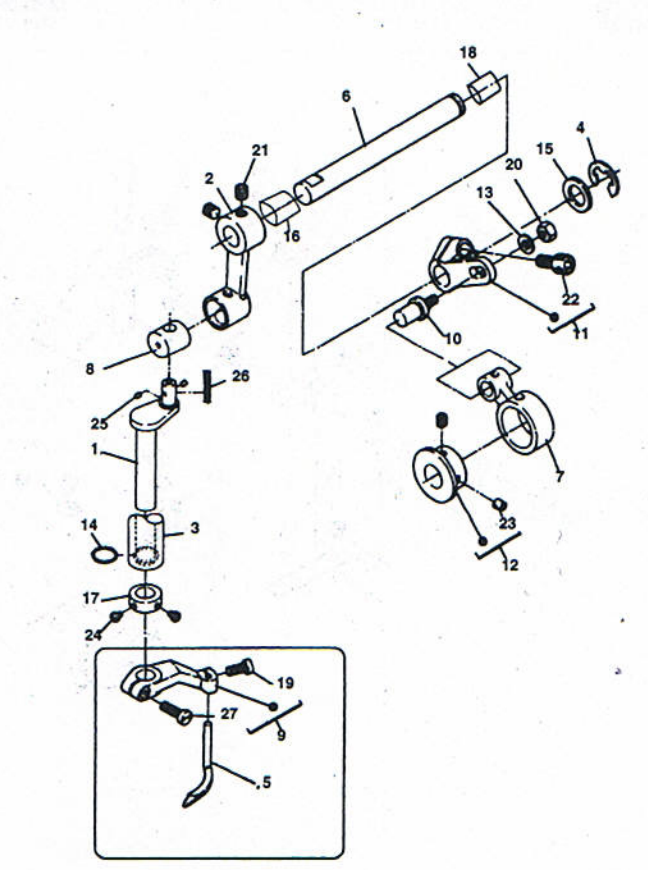
10



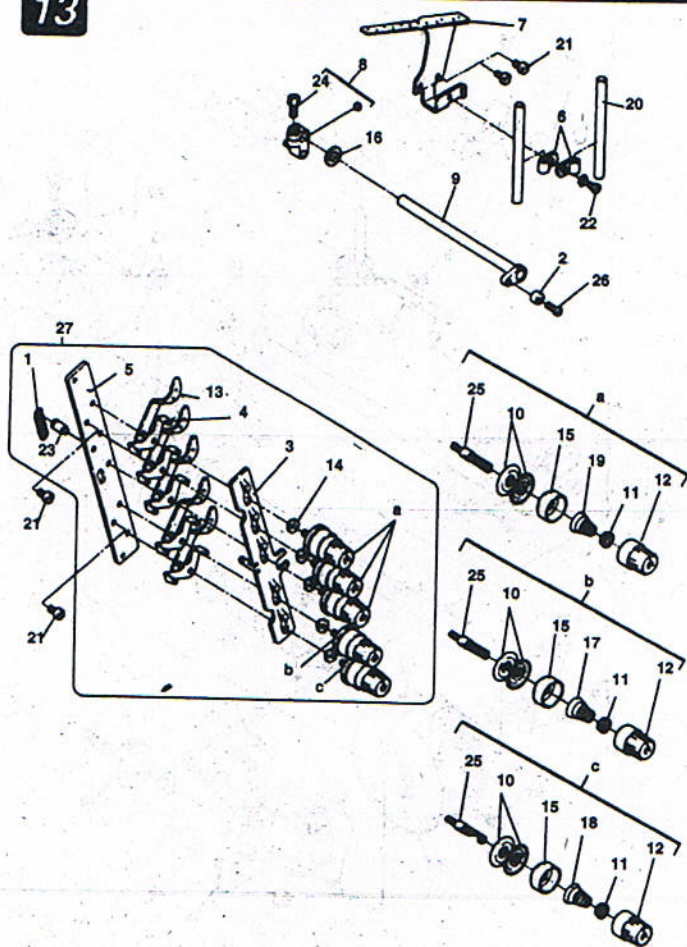
11



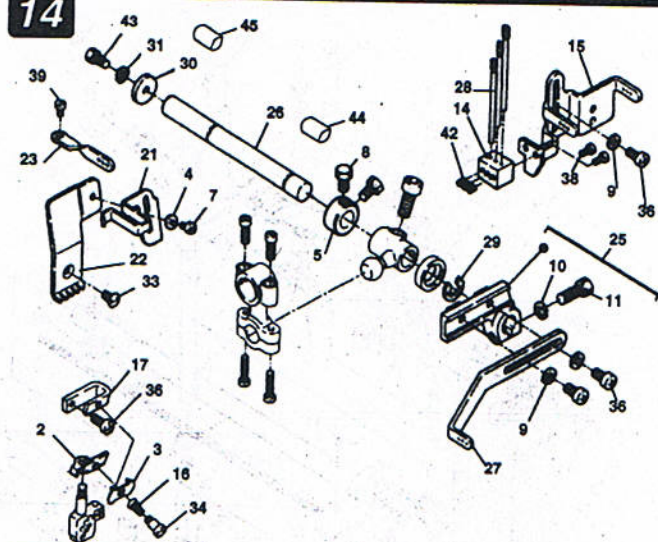
12



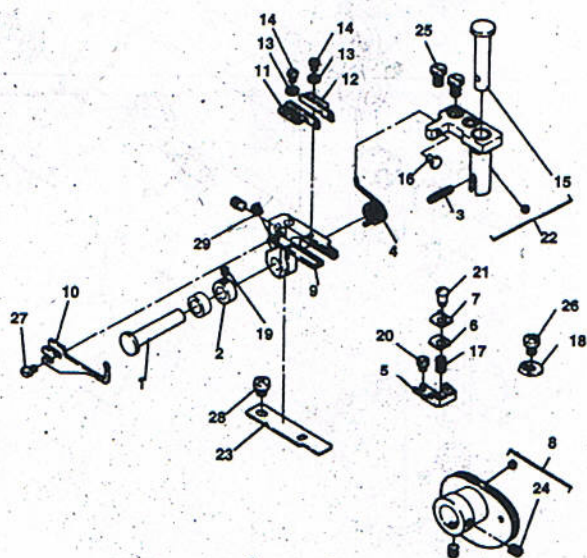
13



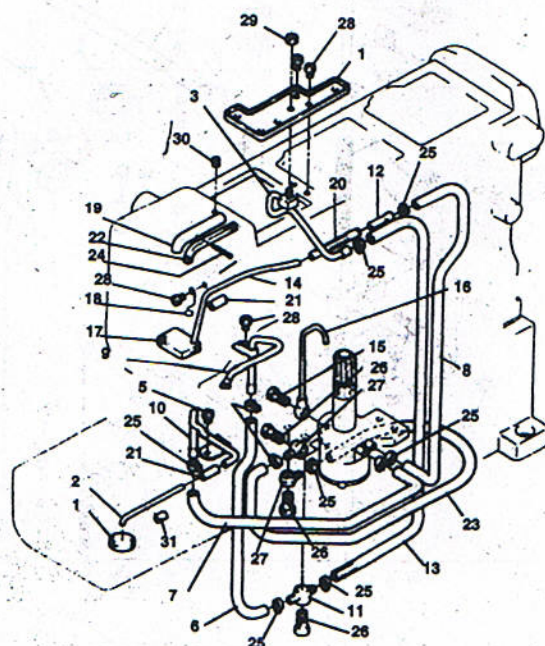
14



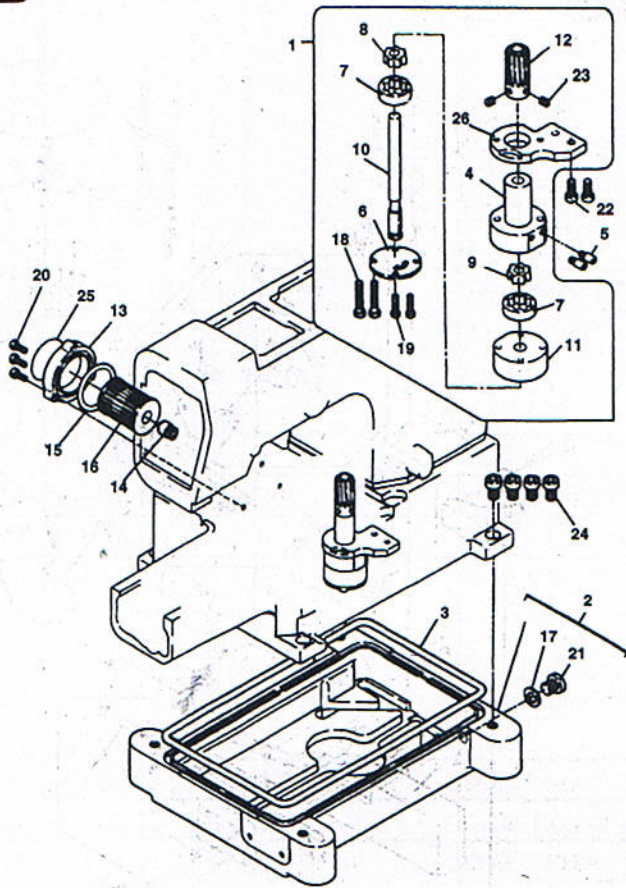
15



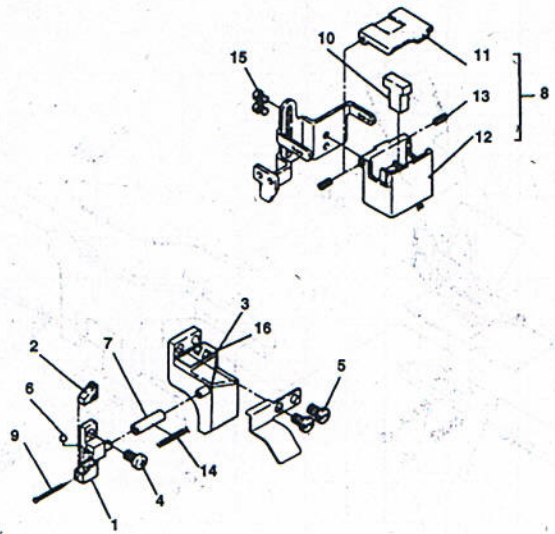
16



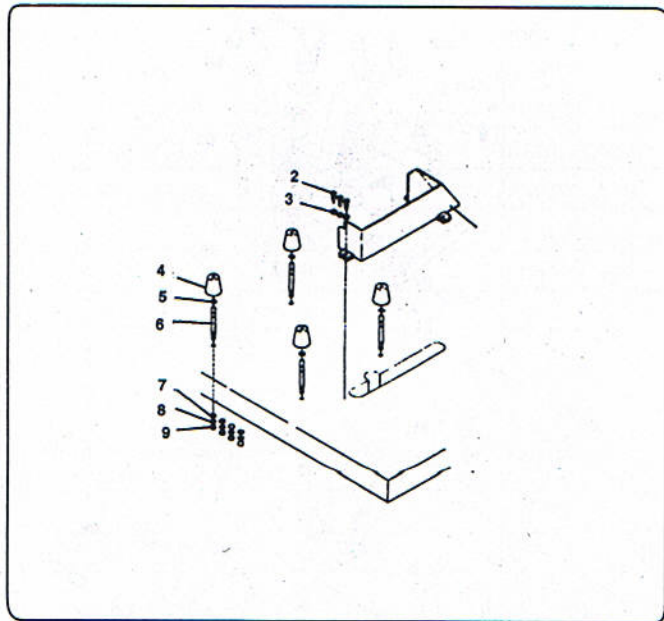
17



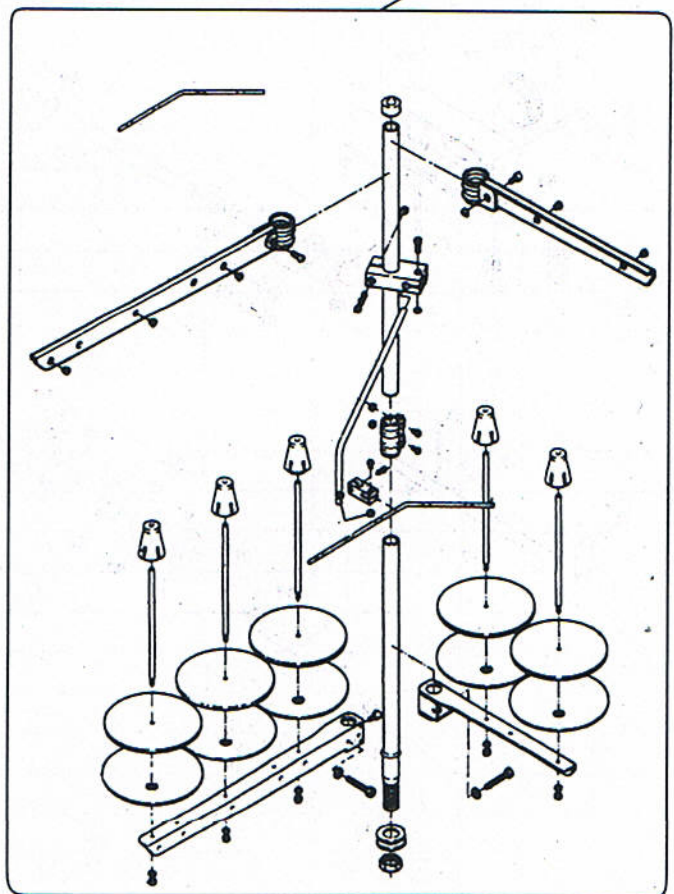
18



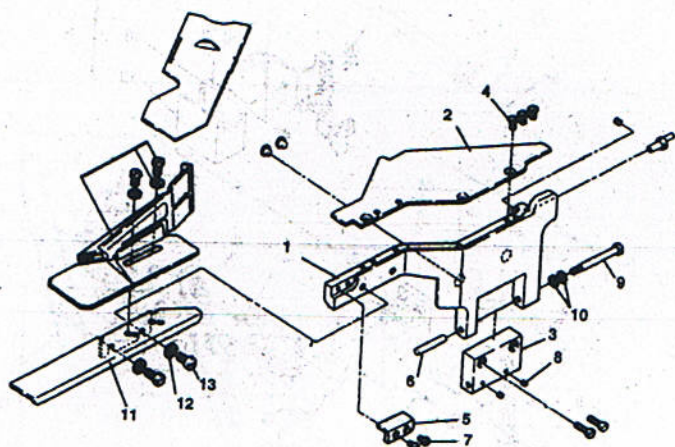
19



20

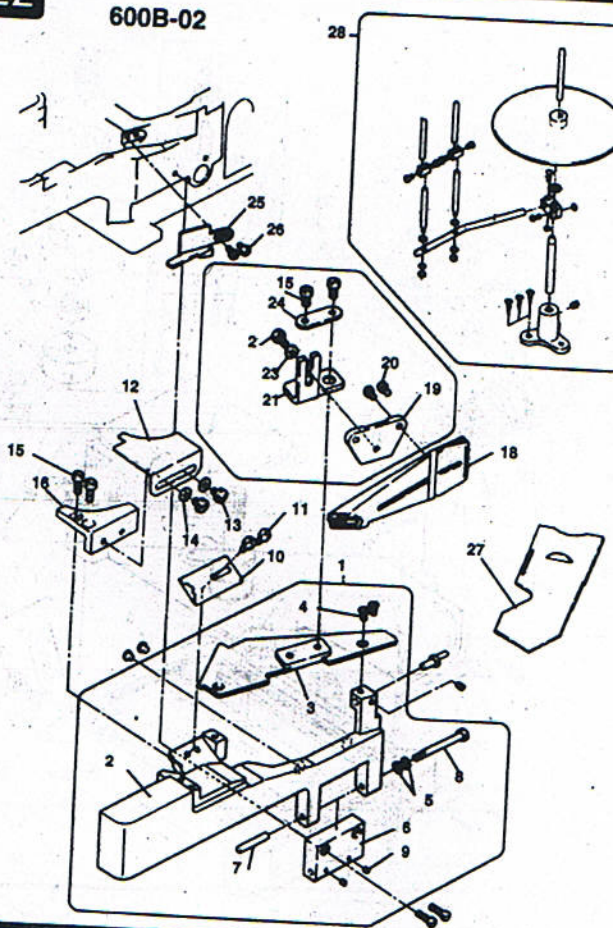


21



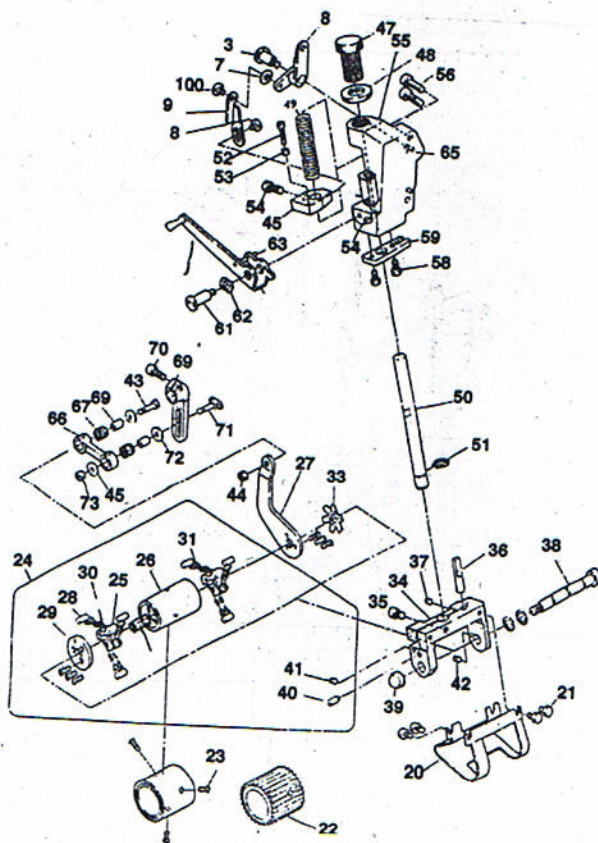
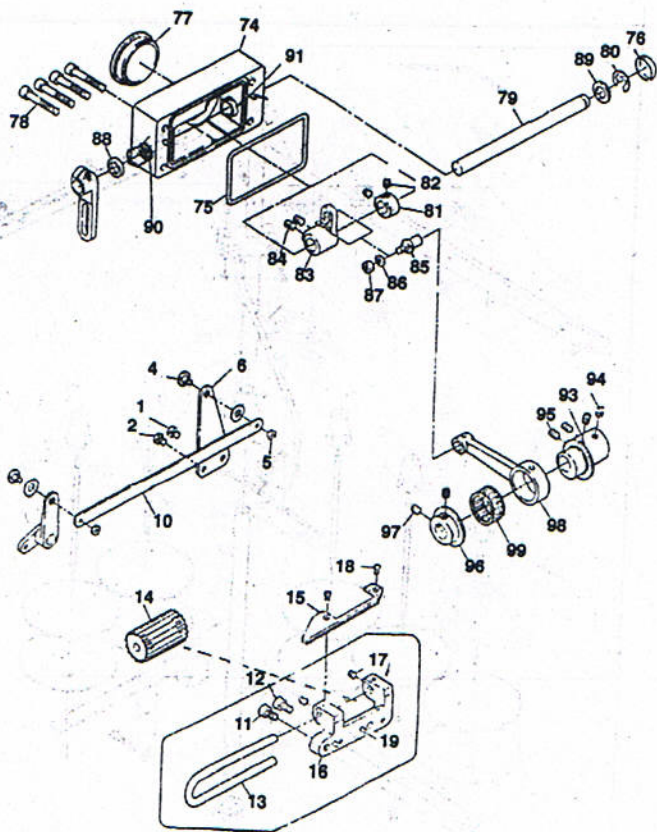
22

600B-02



23

600B-01TL



序号	图号	零件名称	DESIGNATION	-01	-02	-03	-04	-01TL
1	304.00-01	机壳	ARM	1	1	1	1	1
2	304.00-02	底板(机座)	BED	1	1	1	1	1
3	304.01-01	螺钉	SCREW GB80-85 M6×6	2	2	2	2	
4	304.01-02	螺钉	SCREW M5×6	2	2	2	2	2
5	304.01-03	油线	OIL WICK	1	1	1	1	1
6	304.01-04	橡皮塞	YUBBER PKUG	1	1	1	1	1
7	304.01-05	堵头	PLUG SCREW	2	2	2	2	2
8	304.01-06	橡皮塞	RUBBER PLUG	1	1	1	1	1
9	304.01-07	滤油网	OIL SCREEN	1	1	1	1	1
10	304.01-08	底罩板油封	OIL SEAL PLUG	1	1	1	1	1
11	304.01-09	油管	OIL TUBE	1	1	1	1	1
12	304.01-10	密封塞	SEAL RING	1	1	1	1	1
13	304.01-11	机座螺钉	MACHINE MOUNTING SCREW	4	4	4	4	4
14	304.01-12	底罩板	BED COVER PLATE	1	1	1	1	1
15	304.01-13	闷头	PLUG STUD	1	1	1	1	1
16	304.01-14	闷头	PLUG STUD	1	1	1	1	1
17	304.01-15	挡圈	RETAINING RING	1	1	1	1	1
18	304.01-16	油量指示圈	OIL LEVEL INDICATOR	1	1	1	1	1
19	304.01-17	铆钉	RIRET	4	4	4	4	4
20	304.01-18	挑线轴骨架密封圈	SEAL RING	2	2	2	2	2
21	304.01-20	指示钉	DIRECTION OF PIN	1	1	1	1	1
22	304.01-21	骨架密封圈	SEAL FILTER	1	1	1	1	1
23	304.01-23	螺钉	SEREW GB818-85 M4×8	2	2	2	2	2
24	304.01-25	骨架密封塞	SEAL FILTER	1	1	1	1	1
25	304.01-26	闷头	PLUG STUD	1	1	1	1	1

序号	图号	零件名称	DESIGNATION	-01	-02	-03	-04	-01TL
1	304.02-01	螺钉	SCREW GB80-85 M3×3	1	1	1	1	1
2	304.02-02	螺钉	SCREW GB818-85 M4×16	2	2	2	2	2
3	304.02-03	皮带护罩螺钉	BELT COVER SCREW GB818-85 M4×7	2	2	2	2	2
4	304.02-04	机头面板	FACE PLATE	1	1	1	1	1
5	304.02-05	面板密封圈	SEAL RING	1	1	1	1	1
6	304.02-06	后窗板	PLATE	1	1	1	1	
7	304.02-07	后窗板垫	SHIM	1	1	1	1	
8	304.02-08	皮带罩	BELT GUARD	1	1	1	1	1
9	304.02-09	护板	PROTECTION SHOOT	1	1	1	1	1
10	304.02-10	底过线导板	BOTTOM THREAD GUIDE PLATE	1	1	1	1	1
11	304.02-12	垫圈	SHIM	4	4	4	4	4
12	304.02-13	防护罩	SHIELD	1	1	1	1	1
13	304.02-14	防护罩支架	SHIELD STAND	1	1	1	1	1
14	304.02-15	防护罩座	PROTECTION HOOD BASE	1	1	1	1	1
15	304.02-16	挑线防护罩	PROTECTION HOOD	1	1	1	1	P
16	304.02-17	上挑线罩座	HOOD BASE	1	1	1	1	1
17	304.02-18	上盖板密封圈	UPPER COVER PLATE SEAL RING	1	1	1	1	1
18	304.02-19	密封圈	SEAL RING	1	1	1	1	1
19	304.02-20	上盖板闷头	PLUG STUD	1	1	1	1	1
20	304.02-21	鞍型垫圈	WASHER	1	1	1	1	1
21	304.02-22	防震塞	PING	2	2	2	2	2



序号	图号	零件名称	DESIGNATION	-01	-02	-03	-04	-01TL
23	304.02-24	喷油窗	WASHER	2	2	2	2	2
24	304.02-25	上盖板	OIL SIGHT	1	1	1	1	1
25	304.02-26	皮带罩螺钉	UPPER COVER PLATE	1	1	1	1	1
26	304.02-27	防护罩铰链螺钉	BELT COVER SCREW GB65-85 M5×60	2	2	2	2	2
27	304.02-28	螺钉	HINGE SCREW	1	1	1	1	1
28	304.02-29	上盖板螺钉	SCREW GB65-85 M6×10	7	7	7	7	1
29	304.02-30	硅油过线架螺钉	UPPER COVER SCREW GB818-85 M4×12	9	9	9	9	9
30	304.02-31	上挑线罩螺钉	THREAD EYELET FRAME SCREW GB818-85 M4×8	2	2	2	2	2
31	304.02-32	防护罩螺钉	SCREW GB818-85 M4×8	2	2	2	2	2
32	304.02-33	面板螺钉	SHIELD SCREW GB65-85 M3×5	2	2	2	2	2
33	304.02-34	销轴	FACE PLATE SCREW SM3/8×28×5	1	1	1	1	1
			ATUD	1	1	1	1	1

序号	图号	零件名称	DESIGNATION	-01	-02	-03	-04	-01TL
1	304.03-01	前仓销轴紧定螺钉	SET SCREW GB77-85 M4×5	-01	-02	-03	-04	-01TL
2	304.03-02	螺钉	SCREW GB818-85 M4×12	2	2	2	2	2
3	304.03-03	螺钉	SCREW GB65-85 M4×8	2	2	2	2	2
4	304.03-04	密封塞	SEAL RING	11	11	11	11	11
5	304.03-05	中仓盖	COVER	1	1	1	1	1
6	304.03-06	中仓盖垫	COVER SHIM	1	1	1	1	1
7	304.03-07	中仓盖板	COVER PLATE	1	1	1	1	1
8	304.03-08	中仓盖推板	SLIDE PLATE	1	1	1	1	1
9	304.03-09	U型针板架	NEEDLE PLATE HOLDER	1	1	1	1	1
10	304.03-10	前仓推板	SLIDE PLATE	1	1	1	1	1
11	304.03-11	前仓推板簧	SLIDE PLATE SPRING	1	1	1	1	1
12	304.03-12	中仓推板簧	SLIDE PLATE SPRING	1	1	1	1	1
13	304.03-13	销轴	STUD	1	1	1	1	1
14	304.03-14	下硅油器板	PLATE	1	1	1	1	1
15	304.03-15	前盖板	FRONT COVER PLATE	1	1	1	1	1
	304.03-15-01	前盖板垫	FRONT COVER PLATE PILLOW	1	1	1	1	1
	304.03-15-02	铰链销	PIN	1	1	1	1	1
16	304.03-16	针板架座	NEEDLE PLATE HOLDER BASE	1	1	1	1	1
17	304.03-17	螺钉	SCREW GB818-85 M4×6	1	1	1	1	1
18	304.03-18	螺钉	SCREW GB818-85 M4×6	2	2	2	2	2
19	304.03-19	螺钉	SCREW GB818-85 M4×12	2	2	2	2	2
20	304.03-20	防震塞	PLUG	3	3	3	3	3
21	304.03-21	螺钉	SCREW GB818-85 M4×16	1	1	1	1	1
				4	4	4	4	4

序号	图号	零件名称	DESIGNATION	-01	-02	-03	-04	-01TL
1	304.04-01	下轴(前)	LOWER SHAFT (FRONT)	-01	-02	-03	-04	-01TL
2	304.04-02	下轴(后)	LOWER SHAFT (REAR)	1	1	1	1	1
3	304.04-03	下轴(前)螺钉	LOWER SHAFT (FRONT) SCREW GB65-85 M4 ×6	1	1	1	1	1
4	304.04-04	下轴(后)螺钉	LOWER SHAFT (REAR) SCREW GB77-85 M6×0.75×4	1	1	1	1	1
5	304.04-05	下轴右铜套	CUPREOUS BUSHING (RIGHT)	2	2	2	2	2
6	304.04-06	下轴左铜套	CUPREOUS BUSHING (RIGHT)	1	1	1	1	1
7	304.04-07	弯针球曲柄	BALL CRANK	1	1	1	1	1
8	304.04-08	下弯针连杆	LOWER LOOPER LINK	1	1	1	1	1
9	304.04-09	后轴承盖螺钉	SCREW GB67-85 M4×8	1	1	1	1	1
10	304.04-10	同步带	TIMING VELT	2	2	2	2	2
11	304.04-11	压紧圈	PRESSER RING	1	1	1	1	1
12	304.04-12	主动时规轮组件	DRIVING WHEEL SUBASSEMBLY	1	1	1	1	1
13	304.04-13	下轴承衬套	LOWER SHAFT REAR BUSHING	1	1	1	1	1
				2	2	2	2	2

14	304.04-14	下轴后衬套组件	LOWER SHAFT REAR BUSHING ASM.	1	1	1	1	1
15	304.04-15	平衡轮	BALANCE WHEEL	1	1	1	1	1
16	304.04-16	油泵蜗杆	OIL PUMP WORM	1	1	1	1	1
17	304.04-17	从动轮	FOLLOWER SHEEL	1	1	1	1	1
18	304.04-18	从动轮垫圈	WASHER	1	1	1	1	1
19	304.04-19	从动轮定位螺钉	POSITIONING SCREW GB78-85 M6×10	1	1	1	1	1
20	304.04-20	联轴器定位螺钉	POSITIONING SCREW GB78-85 M6×0.75×8	2	2	2	2	2
21	304.04-21	螺钉	SCREW GB80-85 M6×0.75×5	12	12	12	12	12
22	304.04-22	从动轮定位螺钉	POSITIONING SCREW GB77-85 M6×10	1	1	1	1	1
23	304.04-23	球曲柄螺钉	BALL CRANK SCREW GB70-85 M6×0.75×14	1	1	1	1	1
24	304.04-24	螺钉	SCREW GB70-85 M5×12	1	1	1	1	1
25	304.04-25	连杆螺钉	CONNECTING ROD SCREW GB818-85 M4×12	4	4	4	4	4

序号	图号	零件名称	DESIGNATION	-01	-02	-03	-04	-01TL
1	304.05-01	从动时规轮	FOLLOWER TIMING WHEEL	1	1	1	1	1
2	304.05-02	上轴(后)	ARM SHAFT (REAR)	1	1	1	1	1
3	304.05-03	上轴(前)	ARM SHAFT (FRONT)	1	1	1	1	1
4	304.05-04	前轴定位螺钉	POSITIONING SCREW GB77-85 M6×0.75×3.5	1	1	1	1	1
5	304.05-05	前轴紧固螺钉	SET SCREW GB78-85 M6×0.75×6	1	1	1	1	1
6	304.05-06	上挑线球曲柄	BALL CRANK	1	1	1	1	1
7	304.05-07	上挑线连杆	CONNECTING ROD	1	1	1	1	1
8	304.05-08	针杆曲柄组件	NEEDLE BAR CRANK COMPLETE SET	1	1	1	1	1
9	304.05-09	平衡块	BALANCE WEIGHT	1	1	1	1	1
10	304.05-10	上轮	HOND WHEEL	1	1	1	1	1
11	304.05-11	联轴器	SHAFT CONNECTION DEVICE	1	1	1	1	
12	304.05-12	后衬套组件	REAR BUSHING COMPLETE SET	1	1	1	1	1
13	304.05-13	上轮垫圈	WASHER	1	1	1	1	1
14	304.05-14	长锥端紧定螺钉	SET SCREW M8×20	1	1	1	1	1
15	304.05-15	螺钉	SCREW M5×10	1	1	1	1	1
16	304.05-16	连杆螺钉	CONNECTING ROD SCREW GB818-85 M4×12	2	2	2	2	2
17	304.05-17	连杆螺钉	CONNECTING ROD SCREW GB818-85 M4×12	2	2	2	2	2
18	304.05-18	螺钉	SCREW GB80-85 M8×15	1	1	1	1	1
19	304.05-19	上轮止动螺钉	STOP SXREW GB77-85 M6×10	1	1	1	1	1
20	304.05-20	后套紧定螺钉	SET SCREW GB78-85 M6×0.75×8	3	3	3	3	3
21	304.05-21	定位螺钉	POSITIONING SCREW GB80-85 M6×0.75×5	11	11	11	11	11
22	304.05-22	定位螺钉	POSITIONING SCREW GB78-85 M6×10	1	1	1	1	1
23	304.05-23	球曲柄螺钉	CRANK SCREW GB70-85 M6×0.75×14	1	1	1	1	1
24	304.05-24	平衡块紧定螺钉	SET SCREW GB80-85 M5×5	2	2	2	2	2
25	304.05-25	上轮螺钉	HAND WHEEL SCREW GB70-85 M5×15	1	1	1	1	1
26	304.05-27	上轴前衬套	ARM SHAFT (FRONT) LINING	1	1	1	1	1

序号	图号	零件名称	DESIGNATION	-01	-02	-03	-04	-01TL
1	304.06-01	针板螺钉	NEEDLE PLATE SCREW SM9/64×40×7	2	2	2	2	2
2	304.06-02	前保针拨叉螺钉	SCREW SM9/64×40×7.5	1	1	1	1	1
3	304.06-03	针杆	NEEDLE BAR	1	1	1	1	1
4	304.06-04	针杆上套	NEEDLE BAR TOP SHAFT BUSHING	1	1	1	1	1
5	304.06-05	针杆下套	NEEDLE BAR BITTOM SHAFT BUSHING	1	1	1	1	1
6	304.06-06	针杆连杆	NEEDLE BAR CONNECTING LINK	1	1	1	1	1
7	304.06-07	针杆滑块座	NEEDLE BAR SLIDING BLOCK HOLDER	1	1	1	1	1
8	304.06-08	后保针拨叉	REAR NEEDLE GUARD FORK SPREADER	1	1	1	1	1
9	304.06-09	后保针曲柄	REAR NEEDLE GUARD CRANK	1	1	1	1	1
10	304.06-10	油毡定位圈	POSITIONING RING	1	1	1	1	1

13	304.06-13	后保针曲柄铜套	FRONT NEEDLE GUARD CRANK	1	1	1	1	1
14	304.06-14	护针凸轮	CRANK CUPREOUS BUSHING	1	1	1	1	1
15	304.06-15	后拨叉螺钉	CAM.	1	1	1	1	1
16	304.06-16	后保针	REAR FORK SPREADER SCREW GB65-85 M4x7	1	1	1	1	1
17	304.06-17	前保针	REAR NEEDLE GUARD	1	1	1	1	1
18	304.06-18A	针夹	FRONT NEEDLE GUARD	1	1	1	1	1
19	304.06-18-4.8	针夹	NEEDLE CLAMP	1	1	1	1	1
20	304.06-18-4.0	针夹	NEEDLE CLAMP	1	1	1	1	1
21	304.06-19	螺钉	NEEDLE CLAMP	1	1	1	1	1
22	304.06-20	螺钉	SCREW GB818-85 M4x12	1	1	1	1	1
23	304.06-21	针板	SCREW GB818-85 M4x10	1	1	1	1	1
	317.06-28	针板	STITCH PLATE	1				
24	304.06-21-4.8	针板	NEEDLE CLAMP			1		
25	304.06-21-4.0	针板	STITCH PLATE	1				
	318.06-28	针板	STITCH PLATE	1				
26	304.06-22	针杆连杆垫圈	NEEDLE CLAMP					1
27	304.06-23	滚针轴承	WASHER					
28	304.06-24	油线	NEEDLE BUSHING	1	1	1	1	1
29	304.06-25	油线环夹	OIL WICK	1	1	1	1	1
30	304.06-26	针杆滑块	RING CLAMP	1	1	1	1	1
31	304.06-27	针杆接头	NEEDLE BAR SLIDING BLOCK	1	1	1	1	1
32	304.06-28	针杆连接销	NEEDLE BAR CONNECTION	1	1	1	1	1
33	304.06-29	油毡	CONNECTION PIN	1	1	1	1	1
34	304.06-30	针杆接头螺钉	OIL FELT	1	1	1	1	1
35	304.06-31	针夹螺钉	NEEDLE BAR CONNECTION SCREW SM11/64x40x10	1	1	1	1	1
36	304.06-32	紧定螺钉	SCREW GB80-85 M3x3	3	3	3	3	3
			SET SCREW GB80-85 M4x4	1	1	1	1	1

序号	图号	零件名称	DESIGNATION	-01	-02	-03	-04	-01TL
1	304.07-01	紧定螺钉	SET SCREW GB80-85 M6x6					
2	304.07-02	弯针传动轴螺钉	SCREW FOR LOOPER DRIVING SHAFT GB70-85 M4x10	2	2	2	2	2
3	304.07-03	叉口螺钉	JAW SCREW SM11/64x40x10	1	1	1	1	1
4	304.07-04	弯针固定螺钉	FIXING SCREW GB80-85 M4x4	1	1	1	1	1
5	304.07-05	弯针曲柄螺钉	CRANK SCREW SM9/64x40x9	1	1	1	1	1
6	304.07-06	弹簧挡圈	ELASTIL RING	1	1	1	1	1
7	304.07-07	滚针轴承	NEEDLE BUSHING	1	1	1	1	1
8	304.07-08	左轴套O型圈	ORING	1	1	1	1	1
9	304.07-09	曲柄轴套垫片	SHIM FOR CRANK SHAFT BUSHING	1	1	1	1	1
10	304.07-10	弯针凸轮连杆	CAM CONNECTING ROD	1	1	1	1	1
11	304.07-11	弯针凸轮	CAM.	1	1	1	1	1
12	304.07-12	弯针调节柱	LOOPER REGULATING COLUMN	1	1	1	1	1
13	304.07-13	弯针摆杆座	LOOPER ROCK BAR BASE	1	1	1	1	1
14	304.07-14	弯针曲柄座垫圈	SHIM	1	1	1	1	1
15	304.07-15	弯针摆杆	LOOPER ROCK BAR	2	2	2	2	2
16	304.07-16	销	PIN	1	1	1	1	1
17	304.07-17	弯针传动轴	LOOPER DRIVING SHAFT	1	1	1	1	1
18	304.07-18	弯针传动轴前套	LOOPER DRIVING SHAFT BUSHIN(L)	1	1	1	1	1
19	304.07-19	弯针传动轴后套	LOOPER DRIVING SHAFT BUSHING(R)	1	1	1	1	1
20	304.07-20	下弯针曲柄座(右)	CRANK BAS (RIGHT)	1	1	1	1	1
21	304.07-21	弯针传动轴连杆	LOOPER DRIVING SHAFT CONNECTING ROD	1	1	1	1	1
22	304.07-22	垫片	SHIM	2	2	2	2	2

23	304.07-23	弯针轴	LOOPER SHAFT	1	1	1	1	1
24	304.07-24	弯针定位轴左套组件	LOOPER SHAFT SETTING BUSHING(LEST)	1	1	1	1	1
25	304.07-25	弯针轴定位右套	LOOPER SHAFT SETTING BUSHING(RIGHT)	1	1	1	1	1
26	304.07-26	垫圈	WASHER	1	1	1	1	1
27	304.07-27	弯针曲柄座螺钉	SCREW GB65-85 M4×10	2	2	2	2	2
28	304.07-28	弯针座	LOOPER BASE	1	1	1	1	1
29	304.07-29	弯针座垫圈	WASHER	1	1	1	1	1
30	304.07-30	下弯针曲柄座(左)	CRANK BASE(LEFT)	1	1	1	1	1
31	304.07-31	弯针调节螺母	LOOPER ADJUSTING NUT	1	1	1	1	1
32	304.07-33	弯针凸轮螺钉	SCREW FOR LOOPER CAM GB80-85 M6×0.75×5	1	1	1	1	1
33	304.07-32	弹性挡圈	SPRING	1	1	1	1	1
34	304.07-34	叉口	JAW	1	1	1	1	1
35	304.07-35	球曲柄螺钉	CRANK SCREW GB70-85 M6×0.75×14	1	1	1	1	1
36	304.07-36	螺钉	SCREW GB80-85 M4×4	1	1	1	1	1
37	304.07-37	垫圈	WASHER	1	1	1	1	1
38	304.07-38	下弯针	LOOPER	1	1	1	1	1

序号	图号	零件名称	DESIGNATION	-01	-02	-03	-04	-01TL
1	304.08-01	螺钉	SCREW GB80-85 M4×5	3	3	3	3	3
2	304.08-02	螺钉	SCREW GB77-85 M4×10	1	1	1	1	1
3	304.08-03	螺钉	SCREW GB68-85 M3×8	1	1	1	1	1
4	304.08-04	螺钉	SCREW GB68-85 M4×10	2	2	2	2	2
5	304.08-05	螺钉	SCREW GB77-85 M6×0.75×6	2	2	2	2	2
6	304.08-06	开口挡圈	RETAINING RING	1	1	1	1	1
7	304.08-07	开口挡圈	RETAINING RING	1	1	1	1	1
8	304.08-08	滚针轴承	NEEDLE BUSHING	1	1	1	1	1
9	304.08-09	羊毛毡	WOOL FELT	6	6	6	6	6
10	304.08-10	油线	OIL WICK	3	3	3	3	3
11	304.08-11	羊毛毡	WOOL FELT	4	4	4	4	4
12	304.08-12	垫片	SHIM	1	1	1	1	1
13	304.08-13	C型轴用挡圈(A)	RETAINING RING(A)	1	1	1	1	1
14	304.08-14	滚针轴承	NEEDLO BUSHING	1	1	1	1	1
15	304.08-15	C型轴用挡圈(B)	RETAINING RING(B)	1	1	1	1	1
16	304.08-16	调节轴O型圈	O RING	1	1	1	1	1
17	304.08-17	带销连杆	CONNETING BAR	1	1	1	1	1
18	304.08-18	送布偏心凸轮	FEED ECCENTRIC CAM	1	1	1	1	1
19	304.08-19	弯针连杆	LOOPER CONNECTING ROD	1	1	1	1	1
20	304.08-20	送布连杆	FEED CONNECTING LINK	1	1	1	1	1
21	304.08-21	销轴	STUD	1	1	1	1	1
22	304.08-22	针距小连杆	CONNECTING ROD(SMALL)	1	1	1	1	1
23	304.08-23	小连杆	CONNECTING LINK(SMALL)	1	1	1	1	1
24	304.08-24	曲柄	CRANK	1	1	1	1	1
25	304.08-25	拉簧曲柄	SPRING CRANK	1	1	1	1	1
26	304.08-26	拉簧	SPRING	1	1	1	1	1
27	304.08-27	调节杆轴	REGULATING LEVEL SHAFT	1	1	1	1	1
28	304.08-28	调节杆轴铜套	REGULATING LEVEL SHAFT CUPREOUS BUSH	1	1	1	1	1
29	304.08-29	挡铁	RETAINING IRON	1	1	1	1	1
30	304.08-30	调节杆扳手	REGULATING LEVEL WRENCH	1	1	1	1	1
31	304.08-31	调节板	REGULATING PLATE	1	1	1	1	1
32	304.08-32	调节轴	REGULATING RING	1	1	1	1	1
33	304.08-33	调节轴轴轴套	REGULATING SHAFT BUSHING	1	1	1	1	1
34	304.08-34	调节圈	REGULATING RING	1	1	1	1	1

35	304.08-35	小盖板(指示牌)	COVER PLATE(SMALL)						
36	304.08-36	卡铁	IRON	1	1	1	1	1	1
37	304.08-37	拉簧螺钉	SPRING SCREW	1	1	1	1	1	1
38	304.08-38	销轴	STUD	1	1	1	1	1	1
39	304.08-39	螺钉	SCREW GB70-85 M5×12	1	1	1	1	1	1
40	304.08-40	螺钉	SCREW GB80-85 M6×0.75×5	1	1	1	1	1	1
41	304.08-41	螺钉	SCREW GB65-85 M5×10	2	2	2	2	2	2
42	304.08-42	紧定螺钉	SET SCREW GB77-85 M5×6	1	1	1	1	1	1
43	304.08-43	O型圈	O RING	2	2	2	2	2	2
				1	1	1	1	1	1

序号	图号	零件名称	DESIGNATION	-01	-02	-03	-04	-01T
1	304.09-01	螺钉	SCREW GB80-85 M6×6	1	1	1	1	1
2	304.09-02	差动滑板螺钉	SCREW GB68-85 M3×6	2	2	2	2	2
3	304.09-03	牙架螺钉	SCREW GB5783-86 M5×0.5×13	1	1	1	1	1
4	304.09-04	紧定螺钉	SCREW GB77-85 M6×0.75×4	1	1	1	1	1
5	304.09-05	差动牙架挡板螺钉	SCREW GB67-85 M4×8	1	1	1	1	1
6	304.09-06	送布牙架挡板螺钉	SCREW GB67-85 M4×5	2	2	2	2	2
7	304.09-07	羊毛毡	WOOL FELT	2	2	2	2	2
8	304.09-08	油线	OIL WICK	1	1	1	1	1
9	304.09-09	油线	OIL WICK	1	1	1	1	1
10	304.09-10	羊毛毡	WOOL FELT	1	1	1	1	1
11	304.09-11	羊毛毡	WOOL FELT	1	1	1	1	1
12	304.09-12	羊毛毡	WOOL FELT	1	1	1	1	1
13	304.09-13	滚针轴承	NEEDLE BUSHING	1	1	1	1	1
14	304.09-14	垫片	SHIM	1	1	1	1	1
15	304.09-15	堵头	PLUG SCREW	1	1	1	1	1
16	304.09-16	堵头	PLUG SCREW	1	1	1	1	1
17	304.09-17	送布轴紧圈	FEED SHAFT COLLAR	1	1	1	1	1
18	304.09-18	差动轴紧圈	DIFFERENTIAL SHAFT COLLAR	1	1	1	1	1
19	304.09-19	羊毛油毡	OIL FELT	2	2	2	2	2
20	304.09-20	骨架密封圈	SWAL RING	1	1	1	1	1
21	304.09-21	送布轴组件	FEED SHAFT COMPLETE SET	1	1	1	1	1
22	304.09-21-2.1	送布轴前套	FRONT BUSHING	1	1	1	1	1
23	304.09-21-2.2	送布轴中套	SHAFT BUSHING(CENTRE)	1	1	1	1	1
24	304.09-21-2.3	送布轴后套	REAR BUSHING	1	1	1	1	1
25	304.09-22	主送布牙	MAIN FEED DOG	1	1	1	1	1
	317.06-22	主送布牙	MAIN FEED DOG				1	1
28	304.09-23	差动送布牙	DIFFERENTIAL FEED DOG			1		
	317.06-23	差动送布牙	DIFFERENTIAL FEED DOG	1			1	1
31	304.09-24	牙架销轴	FEED BAR STUD			1		
32	304.09-25	差动器滑块	DIFFERENTIAL FEEDER SLIDING BLOCK GUIDE	1	1	1	1	1
33	304.09-26	牙架滑块	FEED BAR SLIDING BLOCK	1	1	1	1	1
34	304.09-27	差动器组件	SLIDING PLATE ARM	1	1	1	1	1
35	304.09-30-1	差动轴左套	SHAFT BUSHING(LEFT)	1	1	1	1	1
36	304.09-30-2	差动轴右套	SHAFT BUSHING(RIGHT)	1	1	1	1	1
37	304.09-31	差动连杆	DIFFERENTIAL FEED CONNECTING LINK	1	1	1	1	1
38	304.09-32	差动连杆套	CONNECTING LINK BUSHING	1	1	1	1	1
39	304.09-33	牙架组件	FEED DOG CARRIER BLOCK ASSEMBLY	1	1	1	1	1
40	304.09-34	送布牙架挡板	FEED DOG CARRIER RETAINING PLATE	1	1	1	1	1
41	304.09-35	差动牙架挡板	DIFFERENTIAL FEED BAR RETAINING PLATE	1	1	1	1	1
42	304.09-36	导板	GUIDING PLATE	1	1	1	1	1
43	304.09-37	弯针凸轮螺钉	SCREW GB80-85 M6×0.75×5	1	1	1	1	1
44	304.09-38	骨架密封圈	SEAL RING	1	1	1	1	1
45	304.09-39	拾牙固定轴座	FIXING SHAFT BASE	1	1	1	1	1
46	304.09-40	油线	OIL WICK	1	1	1	1	1

47	304.09-41	限位板螺钉	SCREW GB818-85 M4×8	2	2	2	2	2
48	304.09-42	螺钉	SCREW GB80-85 M4×4	1	1	1	1	1
49	304.09-43	大头钉	PIN	2	2	2	2	2

序号	图号	零件名称	DESIGNATION	-01	-02	-03	-04	-01TL
1	304.10-01	紧定螺钉	SET SCREW GB77-85 M5×6	2	2	2	2	2
2	304.10-02	螺钉	SCREW GB65-85 M5×12	1	1	1	1	1
3	304.10-03	调节螺钉	REGULATING SCREW	1	1	1	1	1
4	304.10-04	拨板柱螺钉	SCREW	1	1	1	1	1
5	304.10-05	开口挡圈	OPEN RETAINING RING	1	1	1	1	1
6	304.10-06	开口挡圈	OPEN RETAINING RING	1	1	1	1	1
7	304.10-07	密封圈	SEAL RING	1	1	1	1	1
8	304.10-08	紧圈	COLLAR	1	1	1	1	1
9	304.10-09	骨架密封圈	SEAL RING	1	1	1	1	1
10	304.10-10	调节螺帽	REGULATING CAP HAT	1	1	1	1	1
11	304.10-11	滑块	SLIDE BLOCK	1	1	1	1	1
12	304.10-12	调节吊板	REGULATING FORK PLATE	1	1	1	1	1
13	304.10-13	吊板连杆	CONNECTING LINK	1	1	1	1	1
14	304.10-14	差动调节曲柄	REGULATING CRANK	1	1	1	1	1
15	304.10-15	弹簧	SPRING	1	1	1	1	1
16	304.10-16	差动曲柄轴	CRANK SHAFT	1	1	1	1	1
17	304.10-17	差动调节轴组件	REGULATING SHAFT COMPLETE SET	1	1	1	1	1
18	304.10-20	差动调节轴左套	SHAFT BUSHING(LEFT)	1	1	1	1	1
19	304.10-21	差动调节轴右套	SHAFT BUSHING(RIGHT)	1	1	1	1	1
20	304.10-22	差动拨叉	DIFFERENTIAL FORK SPREADER	1	1	1	1	1
21	304.10-23	拨叉	FORK SPREADER	1	1	1	1	1
22	304.10-24	拨叉轴组件	SHAFT COMPLETE SET	1	1	1	1	1
23	304.10-28	拨叉轴左套	SHAFT BUSHING(LEFT)	1	1	1	1	1
24	304.10-29	拨叉轴右套	SHAFT BUSHING(RIGHT)	1	1	1	1	1
25	304.10-30	差动刻度板	GRADUATION PLATE	1	1	1	1	1
26	304.10-31	弹簧	SPRING	1	1	1	1	1
27	304.10-32	固定螺帽	FIXING CAP	2	2	2	2	2
28	304.10-33	吊板连杆销	CONNECTING BAR PIN	1	1	1	1	1
29	304.10-34	垫片	SHIM	2	2	2	2	2
30	304.10-35	螺钉	SCREW GB818-85 M4×6	2	2	2	2	2
31	304.10-36	螺钉	SCREW GB818-85 M4×16	2	2	2	2	2
32	304.10-38	O形橡胶密封圈	O RUBBER RING	1	1	1	1	1
33	304.10-39	差动刻度板隔离套	BUSHING	2	2	2	2	2
34	304.10-40	鞍形垫圈	WASHER	1	1	1	1	1
35	304.10-41	螺钉	SCREW GB70-85 M5×12	1	1	1	1	1
36	304.10-42	螺钉	SCREW GB67-85 M4×5	2	2	2	2	2
37	304.10-43	轴紧圈	SHAFT COLLAR	1	1	1	1	1
38	304.10-44	弯针凸轮螺钉	CAM SCREW GB80-85 M6×0.75×5	1	1	1	1	1

序号	图号	零件名称	DESIGNATION	-01	-02	-03	-04	-01TL
1	304.11-01	压紧杆外弹簧	OUTER SPRING	1	1	1	1	1
2	304.11-02	压紧杆内弹簧	INNER SPRING	1	1	1	1	1
3	304.11-03	压紧杆	PRESSER SPRING	1	1	1	1	1
4	304.11-04	压紧杆套	PRESSER BAR BUSHING	1	1	1	1	1
5	304.11-05	紧定螺钉	SET SCREW SM11/64×40×4	1	1	1	1	1
6	304.11-06	垫片	SHIM	1	1	1	1	1
7	304.11-07	螺钉	SCREW GB821-88 M5×25	1	1	1	1	1

图号	零件名称	DESIGNATION	1	1	1	1	1
9	304.11-09	压紧杆防油罩	PRESSER BAR OIL SHIELD	1	1	1	1
10	304.11-10	限位板	LIMITER PLATE	1	1	1	1
11	304.11-11	抬压脚拉杆	TIE-ROD	1	1	1	1
12	304.11-12	抬压脚拉杆座	TIE-ROD BOSE	1	1	1	1
13	304.11-13	抬压轴弹簧	SHAFT SPRING	1	1	1	1
14	304.11-14	调压螺母	PRESSURE REGULOTING CAP	1	1	1	1
15	304.11-15	抬压轴	SHAFT	1	1	1	1
16	304.11-16	压紧杆导架座	PRESSER BAR GUIDE BASE	1	1	1	1
17	304.11-17	压脚吊板	PRESSER FOOT LIFTING STEEVE	1	1	1	1
18	304.11-18	抬压轴紧圈	SHAFT COLLAR	1	1	1	1
19	304.11-19	抬压轴曲柄	CRANK	1	1	1	1
20	304.11-20	拉杆柄	HANDLE	1	1	1	1
21	304.11-21	压紧杆导架	PRESSER BAR GUIDE	1	1	1	1
22	304.11-22	限位紧圈	RETAINING COLLAR	1	1	1	1
23	304.11-23	调压螺杆(组件)	PRESSER BAR REGULATING SCREW-BARCOMPLETR SET	1	1	1	1
24	304.11-24	螺钉	SCREW GB65-85 M5×10	1	1	1	1
25	304.11-25	导架座螺钉	GUIDE BASE SCREW GB818-85 M4×18	1	1	1	1
26	304.11-26	螺钉	SCREW GB818-85 M4×10	2	2	2	2
27	304.11-27	螺钉	SCREW GB65-85 M3×5	2	2	2	2
28	304.11-28	螺钉	SCREW	1	1	1	1
29	304.11-29	螺钉	SCREW SM11/64×40×14	1	1	1	1
30	304.11-30	螺钉	SCREW SM11/64×40×6	1	1	1	1
31	304.11-31	螺钉	SCREW SM11/64×40×12	2	2	2	2
32	304.11-32	螺钉	SCREW SM11/64×40×6	1	1	1	1
33	304.11-33	螺母	SCREW	2	2	2	2
34	304.11-34	螺钉	SCREW SM1/4×40×8	1	1	1	1
35	304.11-35	抬压脚吊板	PRESSER FOOT LIFTING STEEVE	1	1	1	1
36	304.11-36	压脚组件	PRESSER FOOT COMPLETE	1	1	1	1
	318.11-36	压脚	PRESSER FOOT COMPLETE	1			1
39	304.11-37	压脚螺钉	PRESSER FOOT SCREW SM9/64×40×8	1	1	1	1

序号	图号	零件名称	DESIGNATION	-01	-02	-03	-04	-01TL
1	304.12-01	绷针竖轴	UPRIGHT SHAFT	1	1	1	1	1
2	304.12-02	绷针上摆杆	OSCILLATING BAR	1	1	1	1	1
3	304.12-03	绷针竖轴套	BUSHING	1	1	1	1	1
4	304.12-04	开口挡圈	RETAINING RING	1	1	1	1	1
5	304.12-05	绷针	NEEDLE	1	1	1	1	1
6	304.12-06	绷针横轴	CROSSWISS SHAFT	1	1	1	1	1
7	304.12-07	绷针连杆	CONNECTING BAR	1	1	1	1	1
8	304.12-08	绷针连接柱	LOWER OSCILLATING BAR	1	1	1	1	1
9	304.12-09	绷针下摆杆	OSCILLATING BAR	1	1	1	1	1
10	304.12-10	绷针调节摆杆螺钉	SCREW	1	1	1	1	1
11	304.12-11	绷针调节摆杆	OSCILLATING BAR	1	1	1	1	1
12	304.12-12	绷针凸轮	CAM.	1	1	1	1	1
13	304.12-13	垫圈	WASHER	1	1	1	1	1
14	304.12-14	O型圈	O RING	1	1	1	1	1
15	304.12-15	垫圈	WASHER	1	1	1	1	1
16	304.12-16	绷针轴左套	BUSHING(LEFT)	1	1	1	1	1
17	304.12-17	绷针竖轴紧圈	SHAFT COLLAR	1	1	1	1	1
18	304.12-18	绷针轴右套	BUSHING(RIGHT)	1	1	1	1	1
19	304.12-19	螺钉	SCREW GB818-85 M4×10	1	1	1	1	1

20	304.12-20	螺母	NUT	1	1	1	1	1
21	304.12-21	螺钉	SCREW GB80-85 M6×0.75×5	1	1	1	1	1
22	304.12-22	螺钉	SCREW GB70-85 M6×0.75×14	1	1	1	1	1
23	304.12-23	螺钉	SCREW GB80-85 M5×5	2	2	2	2	2
24	304.12-24	螺钉	SCREW 5M1/8"×44×4	2	2	2	2	2
25	304.12-25	油线	OIL WICK	2	2	2	2	2
26	304.12-26	油线	OIL WICK	1	1	1	1	1
27	304.12-27	螺钉	SCREW GB818-85 M4×14	1	1	1	1	1

序号	图号	零件名称	DESIGNATION	-01	-02	-03	-04	-01TL
1	304.13-01	挺线板拉簧	SPRING	1	1	1	1	1
2	304.13-02	隔套	SPACER	1	1	1	1	1
3	304.13-03	过线座	THREAD EYELET BASE	1	1	1	1	1
4	304.13-04	压线过线板2	THREAD GUIDE PLATE 2	5	5	5	5	5
5	304.13-05	挺线板	THREAD EYELET BASE	1	1	1	1	1
6	304.13-06	过线管夹	THREAD EYELET TUBE CLAMP	2	2	2	2	2
7	304.13-07	过线架	THREAD EYELET STAND	1	1	1	1	1
8	304.13-08	挺线杆曲柄	PRESSER FOOT LIFTING STEEVE	1	1	1	1	1
9	304.13-09	挺线杆(组件)	THREAD EYELET BASE SHAFT	1	1	1	1	1
10	304.13-10	夹线板	THREAD TENSION PLATE	10	10	10	10	10
11	304.13-11	夹线防松圈	THREAD TENSION RING	5	5	5	5	5
12	304.13-12	夹线螺母	THREAD TENSION NUT	5	5	5	5	5
13	304.13-13	压线过线板1	THREAD EYELET PLATE	5	5	5	5	5
14	304.13-14	垫圈	WASHER	5	5	5	5	5
15	304.13-15	夹线座	THREAD TENSION BASE	5	5	5	5	5
16	304.13-16	垫圈	WASHER	1	1	1	1	1
17	304.13-17	夹线簧	THREAD TENSION SPRING	1	1	1	1	1
18	304.13-18	夹线簧	THREAD TENSION SPRING	1	1	1	1	1
19	304.13-19	夹线簧	THREAD TENSION SPRING	3	3	3	3	3
20	304.13-20	过线管	THREAD TENSION TUBE	2	2	2	2	2
21	304.13-21	螺钉	SCREW GB818-85 M4×8	4	4	4	4	4
22	304.13-22	螺钉	SCREW GB818-85 M4×6	1	1	1	1	1
23	304.13-23	挺线板螺钉	SCREW GB818-85 M4×8	2	2	2	2	2
24	304.13-24	螺钉	SCREW GB70-85 M5×12	1	1	1	1	1
25	304.13-25	夹线螺钉	THREAD TENSION SCREW STUD	5	5	5	5	5
26	304.13-26	螺钉	SCREW	1	1	1	1	1
27	304.13-28	夹线器组件	THREAD TENSION WARE SAM.	1	1	1	1	1

序号	图号	零件名称	DESIGNATION	-01	-02	-03	-04	-01TL
1	304.14-01	垫圈	WASHER	1	1	1	1	1
2	304.14-04	针轧过线板	THREAD EYELET PLATE	1	1	1	1	1
3	304.14-04A	针轧过线板	THREAD EYELET PLATE	1	1	1	1	1
4	304.14-05	垫圈	WASHER	1	1	1	1	1
5	304.14-06	挑线轴紧圈	THREED TAKE-UP SHAFT COLLAR	1	1	1	1	1
6	304.14-07	螺钉	SCREW	1	1	1	1	1
7	304.14-08	螺钉	SCREW GB65-85 M3×5	1	1	1	1	1
8	304.14-09	螺钉	SCREW	2	2	2	2	2
9	304.14-10	垫圈	WASHER	2	2	2	2	2
10	304.14-11	垫圈	WASHER	1	1	1	1	1
11	304.14-09	螺钉	SCREW GB70-85 M5×15	1	1	1	1	1
12	304.14-13	绷针下过线板	POWER THREAD EYELET PLATE	1	1	1	1	1



14	304.14-15	硅油过线座	THREAD EYELET PLATE	1	1	1	1	1
15	304.14-16	硅油过线架	THREAD EYELET STAND	1	1	1	1	1
16	304.14-17	针轧过线簧	THREAD EYELET SPRING	1	1	1	1	1
17	304.14-18	小过线座	SMALL THREAD EYELET BASE	2	2	2	2	2
18	304.14-19	绷线上导线板	THREAD GUIDE PLATE	1	1	1	1	1
19	304.14-20	张线杆	TENSION BAR	1	1	1	1	1
20	304.14-21	针轧右过线杆	THREAD EYELET BAR(RIGHT)	1	1	1	1	1
21	304.14-22	挑线防护罩	THREAD TAKE-UP GUARD	1	1	1	1	1
22	304.14-23	过线防护罩座	THREAD EYELET GUARD HOLDER	1	1	1	1	1
23	304.14-24	针杆上过线	NEEDLE BAR THREAD EYELET	1	1	1	1	1
24	304.14-25	上叉挑线杆	TOP THREAD TAKE-UP LEVER	1	1	1	1	1
25	304.14-26	挑线杆座	THREAD TAKE-UP LEVER BASE	1	1	1	1	1
26	304.14-27	挑线杆轴	THREAD TAKE-UP LEVER SHAFT	1	1	1	1	1
27	304.14-28	挑线杆	THREAD TAKE-UP LEVER	1	1	1	1	1
28	304.14-29	挑线钉	THREAD TAKE-UP PIN	1	1	1	1	1
29	304.14-30	开口挡圈	RETAINING RING	3	3	3	3	3
30	304.14-31	垫圈	WASHER	1	1	1	1	1
31	304.14-32	止退圈	RATAINING COLLAR	1	1	1	1	1
32	304.14-33	压线簧	PRESSURE SPRING	1	1	1	1	1
33	304.14-34	过线压板	THREAD RETAINING PLATE	1	1	1	1	1
34	304.14-35	针轧过线板螺钉	THREAD GUIDE PLATE SCREW	1	1	1	1	1
35	304.14-36	螺钉	SCREW GB65-85 M4x5	1	1	1	1	1
36	304.14-37	螺钉	SCREW GB818-85 M4x8	1	1	1	1	1
37	304.14-38	螺钉	SCREW GB818-85 M4x8	4	4	4	4	4
38	304.14-39	螺钉	SCREW GB65-85 M3x5	4	4	4	4	4
39	304.14-40	螺钉	SCREW GB65-85 M3x5	1	1	1	1	1
40	304.14-41	夹线螺钉	TENSION SCREW	1	1	1	1	1
41	304.14-42	螺钉	SCREW GB80-85 M3x3	1	1	1	1	1
42	304.14-43	螺钉	SCREW GB80-85 M3x4	1	1	1	1	1
43	304.14-44	挑线杆轴螺钉	SHAFT SCREW GB70-85 M4x8	3	3	3	3	3
44	304.14-46	挑线杆轴前套	THREAD TAKE-UP LEVER SHAFT (FRONT) SET	1	1	1	1	1
45	304.14-47	挑线杆轴后套	THREAD TAKE-UP LEVER SHAFT (BEHIND) SET	1	1	1	1	1

序号	图号	零件名称	DESIGNATION	-01	-02	-03	-04	-01TL
1	304.15-01	挑线凸轮轴	CAM SHAFT	1	1	1	1	1
2	304.15-02	挑线凸轮轴紧圈	CONNECTING SHAFT COLLAR	1	1	1	1	1
3	304.15-03	弹簧销	SPRING PIN	1	1	1	1	1
4	304.15-04	下过线架复位簧	RETURN SPRING	1	1	1	1	1
5	304.15-05	下过线板座	LOWER THREAD GUIDE PLATE BASE	1	1	1	1	1
6	304.15-06	下夹线(下)	LOWER THREAD TENSIONER(BOTTOM)	1	1	1	1	1
7	304.15-07	下夹线(上)	LOWER THREAD TENSIONER(TOP)	1	1	1	1	1
8	304.15-08	绕线凸轮组件	THREAD WINDER CAM COMPLETE SET	1	1	1	1	1
9	304.15-09	绕线器	THREAD WINDER	1	1	1	1	1
10	304.15-10	护弯针线器	LOOPER THREAD GUIDE PLATE	1	1	1	1	1
11	304.15-11	夹线板(右)	TENSION DISC(RIGHT)	1	1	1	1	1
12	304.15-12	夹线板(左)	TENSION DISC(LEFT)	1	1	1	1	1
13	304.15-13	夹线垫片	TENSION SHIM	1	1	1	1	1
14	304.15-14	夹线螺钉	TENSION POST GB69-85 M2.5x4	2	2	2	2	2
15	304.15-15	底线架销	PIN	2	2	2	2	2
16	304.15-16	防震塞	PLUG	1	1	1	1	1
17	304.15-17	下夹线弹簧	LOWER THREAD TENSION SPRING	1	1	1	1	1

18	304.15-18	机座过线板	MACHINE MOUNTING THREAD EYELET PLATE	1	1	1	1	1
19	304.15-19	紧定螺钉	SET SCREW GB80-85 M3×3	1	1	1	1	1
20	304.15-20	螺钉	SCREW GB818-85 M3×4	1	1	1	1	1
21	304.15-21	下夹线螺钉	LOWER THREAD TENSION POST	1	1	1	1	1
22	304.15-22	底线架座组件	THREAD STAND BASE COMPLETE SET	1	1	1	1	1
23	304.15-23	过线座长垫片	LONG SHIM	1	1	1	1	1
24	304.15-24	定位螺钉	POSITIONAL SCREW GB77-85 M4×5	2	2	2	2	2
25	304.15-25	螺钉	SCREW GB65-85 M4×8	2	2	2	2	2
26	304.15-26	螺钉	SCREW GB818-85 M4×6	1	1	1	1	1
27	304.15-30	螺钉	SCREW GB65-85 M3×5	1	1	1	1	1
28	304.15-31	螺钉	SCREW GB818-85 M4×6	1	1	1	1	1
29	304.15-32	螺钉	SCREW GB77-85 M4×5	1	1	1	1	1

序号	图号	零件名称	DESIGNATION	-01	-02	-03	-04	-01TL
1	304.16-01	上油盘	UPPER OIL PAN	1	1	1	1	1
2	304.16-02	油管组件	OIL TUBE SUBASSEMBLY	1	1	1	1	1
3	304.16-03	下轴前座油管	OIL TUBE	1	1	1	1	1
4	304.16-04	机座羊毛毡	WOOL FELT	1	1	1	1	1
5	304.16-05	螺钉	SCREW GB818-85 M4×8	1	1	1	1	1
6	304.16-06	油管	OIL TUBE	1	1	1	1	1
7	304.16-07	油管	OIL TUBE	1	1	1	1	1
8	304.16-08	油管	OIL TUBE	1	1	1	1	1
9	304.16-09	油管组件(中)	OIL TUBE COMPLETE(CENTRE)	1	1	1	1	1
10	304.16-10	油管组件(前)	OIL TUBE COMPLETE(LEFT)	1	1	1	1	1
11	304.16-11	油管接头	OIL TUBE JOINT	1	1	1	1	1
12	304.16-12	油管接头	OIL TUBE JOINT	1	1	1	1	1
13	304.16-13	油管	OIL TUBE	1	1	1	1	1
14	304.16-14	油管	OIL TUBE	1	1	1	1	1
15	304.16-15	双通油螺钉	SCREW	1	1	1	1	1
16	304.16-16	油泵油管组件	OIL TUBE SUBASSEMBLY	1	1	1	1	1
17	304.16-17	机头羊毛毡	WOOL FELT	1	1	1	1	1
18	304.16-18	油管定位勾	OIL TUBE POSITIONATL HOOK	1	1	1	1	1
19	304.16-19	机头油管	OIL TUBE	1	1	1	1	1
20	304.16-20	油管	OIL TUBE	1	1	1	1	1
21	304.16-21	油管	OIL TUBE	2	2	2	2	2
22	304.16-22	油线	OIL WICK	1	1	1	1	1
23	304.16-23	油管	OIL TUBE	2	2	2	2	2
24	304.16-24	油线钉	OIL WICK NAIL	1	1	1	1	1
25	304.16-25	油管夹	OIL TUBE HOLDER	8	8	8	8	8
26	304.16-26	单通油螺钉	SCREW	3	3	3	3	3
27	304.16-27	油管接头	OIL RUBD JOINT	3	3	3	3	3
28	304.16-28	螺钉	SCREW GB818-85 M4×6	3	3	3	3	3
29	304.16-29	螺母	NUT	1	1	1	1	1
30	304.16-30	螺钉	SCREW GB80-85 M5×5	1	1	1	1	1
31	304.16-31	油管	OIL TUBE	1	1	1	1	1

序号	图号	零件名称	DESIGNATION	-01	-02	-03	-04	-01TL
1	304.17-00	油泵组件	OIL PUMP COMPLETE SET	1	1	1	1	1
2	304.17-01	油盘	OIL PAN	1	1	1	1	1
3	304.17-02	油盘密封圈	SEAL RING FOR OIL PAN	1	1	1	1	1
4	304.17-03	油泵上体	OIL PUMP	1	1	1	1	1
5	304.17-04	油泵接头	OIL PUMP JOINT	2	2	2	2	2

6	304.17-05	油泵底板	OIL PUMP BED PLATE	2	2	2	2	2
7	304.17-06	内齿轮	INNER GEAR	1	1	1	1	1
8	304.17-07	上齿轮	UPPER GEAR	1	1	1	1	1
9	304.17-08	下齿轮	LOWER GEAR	1	1	1	1	1
10	304.17-09	油泵轴	OIL PUMP SHAFT	1	1	1	1	1
11	304.17-10	油泵壳体	OIL PUMP BUSHING	1	1	1	1	1
12	304.17-11	油泵蜗轮	OIL PUMP WORM WHEEL	1	1	1	1	1
13	304.17-12	滤油器盖	OIL FILTER COVER	1	1	1	1	1
14	304.17-13	滤油器螺钉	SCREW FOR OIL FILTER	3	3	3	3	3
15	304.17-14	O型圈	O RING	1	1	1	1	1
16	304.17-15	滤油器	OIL FILTER	1	1	1	1	1
17	304.17-16	密封圈	SEAL RING					
18	304.17-17	螺钉	SCREW GB65-85 M4x40	2	2	2	2	2
19	304.17-18	螺钉	SCREW GB65-85 M4x25	2	2	2	2	2
20	304.17-19	螺钉	SCREW GB818-85 M4x12	3	3	3	3	3
21	304.17-20	油盘螺钉	SCREW FOR OIL PAN					
22	304.17-21	螺钉	SCREW GB70-85 M5x12	2	2	2	2	2
23	304.17-22	螺钉	SCREW GB80-85 M5x5	2	2	2	2	2
24	304.17-23	螺钉	SCREW GB70-85 M8-20	4	4	4	4	4
25	304.17-24	商标	BRAND	1	1	1	1	1
26	304.17-25	固定板	FIXING PLATE	1	1	1	1	1

序号	图号	零件名称	DESIGNATION	-01	-02	-03	-04	-01TL
1	304.18-01	下硅油盒	LOWER SILICONE OIL BOX	1	1	1	1	1
2	304.18-02	羊毛毡	WOOL FEIT	1	1	1	1	1
3	304.18-03	下硅油箱组件	LOWER SILICONE OIL TANK COMPLETE	1	1	1	1	1
4	304.18-04	硅油盒螺钉	OIL BOX SCREW GB818-85 M4x8	1	1	1	1	1
5	304.18-05	螺钉	SCREW GB67-85 M4x8	2	2	2	2	2
6	304.18-06	堵头	PLUG SCREW	1	1	1	1	1
7	304.18-07	油管	OIL TUBE	1	1	1	1	1
8	304.18-08	上硅油盒组件	UPPER SILICONE OIL BOX COMPLETE	1	1	1	1	1
9	304.18-09	大头针	PIN	1	1	1	1	1
10	304.18-10	上硅油毡	UPPER SILICONE OIL FELT	1	1	1	1	1
11	304.18-11	上硅油盖	UPPER SILICONE OIL CAP	1	1	1	1	1
12	304.18-12	上硅油盒	UPPER SILICONE OIL BOX	1	1	1	1	1
13	304.18-13	开口弹簧销	ELASTIC PIN	2	2	2	2	2
14	304.18-14	油线	OIL WICK	1	1	1	1	1
15	304.18-15	螺钉	SCREW SM9/64x40x5	2	2	2	2	2
16	304.18-16	橡胶垫	RUBBER PLATE	1	1	1	1	1

序号	图号	零件名称	DESIGNATION	-01	-02	-03	-04	-01TL
1	304.19-01	皮带保护罩	BELT COVER	1	1	1	1	1
2	304.19-02	螺钉	SCREW	3	3	3	3	3
3	304.19-03	垫圈	WASHER	3	3	3	3	3
4	304.19-04	胶垫	RUBBER SHIM	4	4	4	4	4
5	304.19-05	开口挡圈	RETAINING RING	4	4	4	4	4
6	304.19-06	螺栓	BOLT	4	4	4	4	4
7	304.19-07	垫圈	WASHER	4	4	4	4	4
8	304.19-08	弹簧垫圈	ELASTIC WASHER	4	4	4	4	4
9	304.19-09	六角螺母	HEXAGON NAT	4	4	4	4	4

序号	图号	零件名称	DESIGNATION	-01	-02	-03	-04	-01TL
----	----	------	-------------	-----	-----	-----	-----	-------

1	304.20-01	线架(套件)	THREAD COMPLETE.	1	1	1	1	1
---	-----------	--------	------------------	---	---	---	---	---

序号	图号	零件名称	DESIGNATION	-01	-02	-03	-04	-01TL
1	304.21-01	穿线罩板	THREAD GUIDE PLATE	1		1	1	1
2	304.21-02	穿线罩上盖板	UPPER COVER	1		1	1	1
3	304.21-03	穿线罩板铰链柱	HINGE COLUMN	1	1	1	1	1
4	304.21-04	穿线罩板螺钉	SCREW	3	2	3	3	3
5	304.21-05	穿线罩护板	SHIELD	1		1	1	1
6	304.21-06	穿线罩板销轴	STUD	1	1	1	1	1
7	304.21-07	穿线罩护板螺钉	SCREW GB65-85 M3x5	2		2	2	2
8	304.21-08	紧定螺钉	SET SCREW GB80-85 M3x3	2	2	2	2	2
9	304.21-09	螺钉	SCREW	1	1	1	1	1
10	304.21-10	鞍型垫圈	WASHER	2	2	2	2	2
11	304.21-11	导布器连接板	CONNECTING PLATE	1	1	1	1	1
12	304.21-12	垫圈	WASHER	2	2	2	2	2
13	304.21-13	螺钉	SCREW	2	2	2	2	2

序号	图号	名称	DESIGNATION	-01	-02	-03	-04	-01TL
1	316.22-01	穿线罩板组件	THREAD GUIDE PLATE COVER COMPLETE		1			
2	316.22-01-01	穿线罩板支座	THREAD GUIDE PLATE COVER		1			
3	316.22-01-02	导布器连接板	THREAD GUIDE PLATE COVER UPPER COVER		1			
4	316.22-01-03	导布器连接板螺钉	SCREW		2			
5	316.22-01-04	波形垫圈	WASHER		2			
6	316.22-01-05	穿线罩铰链	THREADING COVER HINGE		1			
7	316.22-01-06	穿线罩板销轴	THREAD GUIDE PLATE COVER PIN		1			
8	316.22-01-07	穿线罩铰链销轴	LONG SCREW		1			
9	316.22-01-08	穿线罩板销轴紧定螺钉	SET SCREW		2			
10	316.22-01-09	穿线罩板导布板	GUIDE THREAD LATE		1			
11	316.22-01-10	导布板螺钉	GUIDE THREAD LATE SCREW		2			
12	316.22-01-11	送布架	PROTECT PLATE		1			
13	316.22-01-12	送布架螺钉	SCREW		2			
14	316.22-01-13	送布架螺钉垫圈	WASHER		1			
15	316.22-01-14	送布导架螺钉	SCREW		2			
16	316.22-01-15	送布导架	KEEP OFF THREAD PRESS PLATE		1			
18	316.22-02	龙头(夹边器)组件	BIBCOCK COMPLETE		1			
19	316.22-03	龙头固定板	BIBCOCK FIXING PLATE		1			
20	316.22-04	龙头固定板螺钉	BIBCOCK FIXING PLATE SCREW		2			
21	316.22-05	龙头固定板支架	BIBCOCK FIXING PLATE BRACKET		1			
22	316.22-06	龙头固定板支架螺钉	SCREW		3			
23	316.22-07	龙头固定板支架螺钉垫圈	WASHER		1			
24	316.22-08	长垫片	LONG WASHER		1			
25	316.22-09	穿线罩板限位板	STOPPER PLATE		1			
26	316.22-10	穿线罩板限位板螺钉	SCREW		2			
27	316.22-11	中仓盖盖板	SLIDE PLATE		1			
28	316.22-12	线架组件	THREAD STAND COMPLETE		1			
46	316.22-13	主送布牙	MAIN FEED DOG		1			
47	316.22-14	差动送布牙	DIFFERENTIAL FEED EOG		1			
48	316.22-15	针板	NEEDLE PLATE		1			
49	316.22-16	压脚组件	PRESSER FOOT COMPLETE		1			

序号	图号	名称	DESIGNATION	-01	-02	-03	-04	-01TL
1	336.01-01	拖轮摇杆螺钉(长)	TUGBOAT ROCKER SCREW(LONG)					1
2	336.01-02	拖轮摇杆螺钉(短)	TUGBOAT ROCKER SCREW(BRIEF)					1
3	336.01-03	拖轮杠杆铰链螺钉	TUGBOAT LEVER GEMEL SCREW					1
4	336.01-04	拖轮连杆铰链螺钉	TUGBOAT CONNECTING ROD GEMEL SCREW					2
5	336.01-05	拖轮连杆铰链螺钉螺母	NUT					2
6	336.01-06	拖轮摇杆	TUGBOAT ROCKER					1
7	336.01-07	波形垫圈	WASHER					1
8	336.01-08	拖轮杠杆	TUGBOAT LEVER					1
9	336.01-09	拖轮拉杆	TUGBOAT PITMAN ROD					1
10	336.01-10	拖轮连杆	TUGBOAT CONNECTING ROD					1
11	336.01-11	拖布从动轮支架螺钉(长)	SCREW(LONG)					1
12	336.01-12	拖布从动轮支架螺钉(短)	SCREW(BRIEF)					1
13	336.01-13	导布架	LEAD CLOTH RACK					1
14	336.01-14	拖布从动轮	DRAW FABRIC PULLEY					1
15	336.01-15	导布板	GUIDE THREAD PLATE					1
16	336.01-16	从动轮支架	DRIVEN WHEEL SUPPORT					1
17	336.01-17	导布架螺钉	LEAD CLOTH RACK SCREW					2
18	336.01-18	导布板螺钉	GUIDE THREAD PLATE SCREW					2
19	336.01-19	从动轮支架定位销	DRIVEN WHEEL SUPPORT SET PIN					2
20	336.01-20	拖布主动轮防护罩	PULL CLOTH PULLEY SHIELD					1
21	336.01-21	主动轮防护罩螺钉	SCREW					4
22	336.01-22-01	主动轮	PULLEY					1
23	336.01-22-02	主动轮螺钉	PULLEY SCREW					9
24	336.01-22-03	棘轮组件	RATCHET HEEL ASM.					1
25	336.01-22-03-01	棘轮	RATCHET HEEL WHEEL					2
26	336.01-22-03-02	棘轮筒体	RATCHET HEEL CANISTER STYLE					1
27	336.01-22-03-03	棘轮安装板	RATCHET WHEEL MOUNTING PLATE					1
28	336.01-22-03-04	滚子	ROLLER					6
29	336.01-22-03-05	盖	COVER					1
30	336.01-22-03-06	弹簧	SPRING					12
31	336.01-22-03-07	弹簧座	SPRING SEAT					6
32	336.01-22-03-08	套	SHAFT BUSHING					1
33	336.01-23	六角弹簧垫圈	WASHER					1
34	336.01-24	主动轮支架	PULLEY BRACKET					1
35	336.01-25	主动轮支架螺钉	PULLEY BRACKET SCREW					1
36	336.01-26	主动轮支架限位销	PULLEY BRACKET					1
37	336.01-27	支架限位销螺钉	SCREW					1
38	336.01-28	拖布主动轮轴	DRAW FABRIC PULLEY PIN					1
39	336.01-29	拖布主动轮轴螺母	NUT					1
40	336.01-30	棘轮定位螺钉	RATCHET SET SCREW					1
41	336.01-31	棘轮定位螺钉锁紧螺钉	SCREW					1
42	336.01-32	主动轮轴固定螺钉	SET SCREW					1
43	336.01-33	调节连杆螺钉	TEMPER CONNECTING ROD SCREW					1
44	336.01-34	调节连杆螺钉螺母	NUT					2
45	336.01-35	调节连杆垫片	TEMPER CONNECTING ROD WASHER					2
46	336.01-36	主动轮压杆导块	PULLEY PRESSER BAR LEAD CAKE					1
47	336.01-37	主动轮调压螺钉	SCREW					1
48	336.01-38	主动轮调压螺母	NUT					1
49	336.01-39	主动轮调压簧	PRESSER SPRING					1
50	336.01-40	主动轮压杆	PULLEY PRESSER					1
51	336.01-41	主动轮压杆卡簧	PULLEY PRESSER SPRING					1
52	336.01-42	主动轮压杆导块调节螺钉	ADJUST SCREW					1
53	336.01-43	主动轮压杆导块调节螺母	ADJUST NUT					1
54	336.01-44	主动轮压杆导块紧定螺钉	SET SCREW					1
55	336.01-45	主动轮压杆支架	PULLEY PRESSER BRACKET					1
56	336.01-46	压杆支架螺钉	SCREW					2

57	336.01-47	主动轮压杆套筒	PRESSER BAR BUSHING						1
58	336.01-48	支架限位销定位块螺钉	SET SCREW						2
59	336.01-49	支架限位销定位块	SET PIN CAKE						1
60	336.01-50	抬主动轮杠杆	PULLEY LEVER						1
61	336.01-51	抬主动轮杠杆铰链螺钉	SCREW						1
62	336.01-52	波形垫圈	WASHER						1
63	336.01-53	抬主动轮杠杆开口销	PULLEY LEVER PLACKET PIN						1
64	336.01-54	主动轮压杆支架限位销	LIMITER PIN						1
65	336.01-55	主动轮压杆支架定位销	SET PIN						2
66	336.01-56-01	调节连杆	regulating connection link						1
67	336.01-56-02	滚针轴承	NEEDLE BEARING B						2
68	336.01-56-03	内衬套	LINING						2
69	336.01-57	主动轮摆动曲柄	PULLEY ROCK CRANK						1
70	336.01-58	主动轮摆动曲柄螺钉	PULLEY ROCK CRANK SCREW						1
71	336.01-59	曲柄调节螺钉	CRANK ADJUST SCREW						1
72	336.01-60	曲柄调节螺钉垫片	CRANK ADJUST SCREW WASHER						2
73	336.01-61	调节螺母	NUT						1
74	336.01-62	主动轮摆动轴罩壳	PULLEY ROCK PIN COVER						1
75	336.01-63	油封垫	OIL SEAL WASHER						1
76	336.01-64	油塞	OIL CAP						1
77	336.01-65	油塞	OIL CAP						1
78	336.01-66	主动轮摆动轴罩壳螺钉	SCREW						4
79	336.01-67	主动轮摆动轴	PULLEY ROCK SHAFT						1
80	336.01-68	主动轮摆动轴卡簧	PULLEY ROCK SHAFT SPRING						1
81	336.01-69	摆动轴挡圈	ROCK SHAFT THRUST RING						1
82	336.01-70	摆动轴挡圈螺钉	ROCK SHAFT THRUST RING SCREW						2
83	336.01-71	摆动轴曲柄	ROCK SHAFT CRANK						1
84	336.01-72	摆动轴曲柄螺钉	ROCK SHAFT CRANK SCREW						2
85	336.01-73	调节连杆铰链轴	ADJUST CONNECTING ROD GEMEL SHAFT						1
86	336.01-74	调节连杆铰链轴垫片	WASHER						1
87	336.01-75	调节连杆铰链轴螺母	NUT						1
88	336.01-76	摆动轴油封	Oil seal						1
89	336.01-77	摆动轴垫圈	WASHER						1
90	336.01-78	主动轮摆动轴套筒	PULLEY ROCK SHAFT SHAFT BUSHING						1
91	336.01-79	主动轮摆动轴套筒	PULLEY ROCK SHAFT SHAFT BUSHING						1
92	336.01-80	主动轮摆动轴罩壳定位销	SET PIN						2
93	336.01-81	主轴摆动凸轮	MAIN SHAFT ROCK CAM						1
94	336.01-82	凸轮固定螺钉	CAM SET SCREW						2
95	336.01-83	凸轮定位螺钉	CAM SET SCREW						2
96	336.01-84	凸轮挡圈	THRUST RING						1
97	336.01-85	凸轮挡圈螺钉	SCREW						2
98	336.01-86	摆动连杆	ROCK CONNECTING ROD						1
99	336.01-87	滚针轴承	NEEDLE BEARING						1
100	336.01-88	拖轮连杆铰链螺钉	SCREW						2

# 664 ガージパーツ表

# 更换零件对照表

# 664 GAUGE PATRS LIST



形式	ゲージ	針留	針板	主送り歯	差動送り歯	押し	ルーバー	針受(前)	針受(後)	スプレッダー	針
MACHINE TYPE / SPEC.	GAURE	NEEDLEHOLDER	NEEDLEPLATE	MAIN FEED DOG	DIFF. FEED DOG	PRESSER FOOT	LOOPER	FRONT	REAR	SPREADER	NEEDLE
664-01CB	232	257500C32	257015B32	257242-16F	257289-16F	257460-32					
	240	" 40	" 40		" 40	" 40					
	248	" 48	" 48		" 48	" 48					
	256	" 56	257017B56		" 56	" 56	257566	257566	257567	257565	UY128GAS # 9S
	264	" 64	" 64		" 64	" 64					
	356	257501C56	257018B56	257243-16F	257290-16F	257461-56					
	364	" 64	" 64		" 64	" 64					
	232	257500C32	257029B32	257244-16F	257291-16F	257317A32					
	240	" 40	257030B40	257245-16F	257292-16F	257318A40					
	248	" 48	" 48		" 48	" 48					
664-02BB	256	" 56	257033B56	257546-16F	257293-16F	257319A56	257566	257568	257567	257565	UY128GAS # 9S
	264	" 64	" 64		" 64	" 64					
	356	257501C56	257033B56		257321A56						
	364	" 64	" 64		" 64	" 64					
	232	257500C32	257098B32	257242-16F	259214-16F	257467-32					
	240	" 40	" 40		" 40	" 40					
	248	" 48	257099B48	259102-16F	" 48	" 48					
	256	" 56	257096B56		" 56	" 56	257566	257568	257567	257565	UY128GAS # 9S
	264	" 64	" 64	259103-16F	259215-16F	257468-56					
	356	257501C56	257097B56		" 64	" 64					
664-03FB	364	" 64	" 64		" 64	" 64					
	240	257500C40	257107B40	259109-16F	259219-16F	257475-56					
	248	" 68	" 48		" 48	" 48					
	356	257501C56	257501B56	259110-16F	259220-16F	257476-56	257566	257568	257567	257565	UY128GAS # 9S
	364	" 56	" 64		" 64	" 64					
664-08BB	364	" 56	" 64		259110-16F	259220-16F					
	356	257501C56	257501B56		259110-16F	259220-16F					
	248	" 68	" 48		259110-16F	259220-16F					
	364	" 56	" 64		259110-16F	259220-16F					